



## ISTANBUL METROPOLITAN MUNICIPALITY AFFILIATED COMPANIES CATALOGUE



ISTANBUL  
METROPOLITAN  
MUNICIPALITY





## Fellow Citizens,

Istanbul is one of the most important metropolises of the world with its special location at the point where the continents meet and with its deep-rooted historical and cultural heritage, 16 million population, economic, commercial and touristic potential. The valuable work that Istanbul Metropolitan Municipality affiliated companies carry out without interruption is of great importance on the way to a "just, green and creative" Istanbul that we have promised. We are working for 16 million people with the goal of carrying Istanbul to a better future with a new generation urbanism mentality.

From the moment we started our duty, we have brought in great changes with an innovative vision, and we continue to do so. Istanbul Metropolitan Municipality and all its affiliate companies, with this innovative vision, are moving towards the same goal in the light of common values such as equality, participation, transparency, innovation and merit. In every step we take, we prioritize the public interest and developing solutions for the real needs of Istanbulites.

We touch the lives of Istanbulites in every field from environment to technology, from food to transportation, from sports to construction. In this respect, we use the dynamics of our city on behalf of and for the benefit of Istanbulites, who are the real owners of Istanbul, with a modern and democratic management approach, never forgetting that our responsibility is enormous.

Since the day we took office, we have implemented a local government model based on the understanding of equal service to every district and every neighborhood of Istanbul. We embrace each of our 16 million citizens, regardless of their political thought, religion, language, race, social and economic position, and unite them without dividing them, and we offer fair and equal service to all Istanbul residents.

We know that this city will only progress to a contemporary future with an understanding that emphasizes common sense and science. In IMM and our affiliate companies, we act with a participatory approach that prioritizes the needs, opinions and suggestions of all our stakeholders, scientists, non-governmental organizations and Istanbulites, who are the real owners of the city.

We make plans and develop projects in the light of common sense. We are expanding the city's economy, creating job opportunities, and redrawing the future of Istanbul with an effective, efficient and contemporary approach, with the services our affiliate companies provide. With the understanding of merit, loyalty to duty, care for the city and respect for people, we continue our services aimed at facilitating and beautifying the lives of Istanbulites without slowing down.

We will continue to implement our services and investments on the way to a "just, green and creative" Istanbul. Our greatest strength and motivation on this path will be your love, support and companionship, as always.

You can find all our subsidiaries, the products and services they offer in the Istanbul Metropolitan Municipality Affiliate Companies Catalogue. Istanbul Metropolitan Municipality, its subsidiaries and affiliate companies will continue to work diligently to add value to the lives of 16 million Istanbulites.



**Ekrem İmamoğlu**

**Mayor of Istanbul**





With 232 billion dollars of gross revenue, Istanbul constitutes one third of Turkey's economy. Istanbul Metropolitan Municipality, along with its 30 affiliate companies, is undoubtedly one of the most important actors of Istanbul's economy.

Operating in every area, from construction to transportation, environment to energy, service sector to information technologies, our affiliate companies have been managed with a brand new approach since 2019. Having been completely opened to independent auditing, our affiliate companies have stronger financial structures and enhanced operational performances.

As a result, Istanbul Metropolitan Municipality was included in the 2019 Fortune 500 Turkey along with its 6 affiliate companies, and in 2020 this number went up to 10. In the upcoming period, we will witness a much faster and healthier growth.

With unique experiences in their areas of activity, our affiliate companies produce and offer services with a strong sense of social responsibility and according to high quality standards; achieving an extremely difficult job of satisfying 16 million Istanbulites.

I believe that getting to know these affiliate companies well will bring you a new perspective, and open up very valuable business opportunities. I would like to thank all of our employees who gave me confidence and made me proud, and to our Mayor, Mr. Ekrem Imamoglu.

**Ertan Yıldız**

**Advisor to Mayor for Affiliate Companies**







## CONSTRUCTION



 <b>İSTON A.Ş.</b> Istanbul Concrete Elements and Ready Mixed Concrete Factories Co.	Urban Furniture Children's Playground Dog Training Park Skate Park and Pumptrack Bus Stops Cobblestones and Curbs Project Services Structure Laboratory Services Ready-Mixed Concrete Concrete and Reinforced Concrete Pipe	16
 <b>KİPTAŞ</b> Istanbul Residence Development Plan Industry and Trade Co.	Housing Projects Development	28
 <b>İSFALT A.Ş.</b> Istanbul Asphalt Co.	Asphalt Production	36
 <b>BİMTAŞ</b> Istanbul Engineering and Consultancy Services Co.	3D Mapping Geographical Information Systems Services Photogrammetric Maps 360 Degrees Panoramic Imaging of Locations Virtual Reality Applications Restoration Projects City and Regional Planning Services	40
 <b>İSTANBUL İMAR A.Ş.</b> Istanbul Reconstruction Co	Development of Construction Projects	44




## ENVIRONMENT



48	Nursery Management Landscaping Projects Environmental Planning	<b>AĞAÇ VE PEYZAJ A.Ş.</b> Istanbul Tree and Landscape Co. 
56	Waste Management Consultancy Services Waste Facility Construction Emission Trading Education Activities	<b>İSTAÇ A.Ş.</b> Istanbul Environment Management Industry and Trade Co. 


## ENERGY



66	Natural Gas Distribution	<b>İGDAŞ</b> Istanbul Gas Distribution Industry and Trade Inc. Co. 
68	Fuel Oil Management Illumination Management Energy Management Waste Management	<b>İSTANBUL ENERJİ A.Ş.</b> Istanbul Energy Industry and Commerce Co. 
72	Infrastructure Inspection Services Calibration Services Energy Inspection Services Information Technology Consultancy HOT-TAP Operations	<b>UGETAM</b> Istanbul Applied Gas and Energy Technologies Research and Engineering Trade Co. 

## TECHNOLOGY



82	Electronic Payment Systems Smart Card Applications	<b>BELBİM A.Ş.</b> BELBİM Electronic Money and Payment Services Co. 
84	Istanbul It and Smart City Technologies	<b>İSBAK A.Ş.</b> İSBAK Istanbul It and Smart City Technologies Inc. 








## COMMUNICATION



 <b>İSTTELKOM A.Ş.</b> Istanbul Electronic Communication and Infrastructure Co.	Data Center Solutions	98
	Communication Infrastructure Management Services	
	Wireless Network Services	
	Robotics Process Automation Solutions	
	Cyber Security Services	
	Digital Archive System Solutions	
	Digital Publication Services	
	SD-WAN Services	
	Internet of Things (IoT) Services	





## SERVICE



 <b>KÜLTÜR A.Ş.</b> Istanbul Culture Co.	Cultural Events (Festivals, Concerts, etc.)	108
 <b>İSYÖN A.Ş.</b> Istanbul Seafood Wholesale Market Management Co.	Cold Storage Room Services Ambulance Services Seedling Production	110
 <b>İSTGÜVEN A.Ş.</b> Istanbul Security Co.	Security Consultancy Security Personnel Training	112
 <b>SPOR İSTANBUL A.Ş.</b> Sports Istanbul Co.	Establishment of Sports Facilities Organization of Sports Activities	114
 <b>MEDYA A.Ş.</b> Istanbul Media Co.	Brand Promotion and Advertising Activities Social Media Management Services Media Planning and PR Web Design	116
 <b>BOĞAZİÇİ YÖNETİM A.Ş.</b> Boğaziçi Management Consultancy Co.	Housing Management And Consultancy	118
 <b>İSPER A.Ş.</b> Istanbul Personnel Management Co.	Labor Force Support Human Resources Consultancy Services Education and Development Programs	120

## FOOD



124	Bakery Products Production	<b>HALK EKMEK A.Ş.</b> Istanbul Public Bread Co. 
126	Bottled Natural Spring Water Production	<b>HAMİDİYE A.Ş.</b> Istanbul Spring Water Co. 
130	Tourism Management Restaurant and Cafe Management	<b>BELTUR A.Ş.</b> Istanbul Tourism and Health Investments Management Co. 
132	Bottled Natural Spring Water Production	<b>GÜVEN SU A.Ş.</b> GUVEN SU Water Co. 

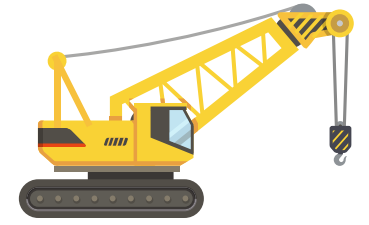
## TRANSPORTATION



136	Public Transportation Services	<b>İSTANBUL ULAŞIM A.Ş.</b> Istanbul Transportation Co. 
138	Public Sea Transportation Services Dockyard Services (Sea Taxi, Excursion Boats, etc.)	<b>ŞEHİR HATLARI A.Ş.</b> Istanbul Ferry Lines Co. 
142	Rail System Management Rail System Training Platform Screen Doors Manufacturing and Installation Tram Surveillance System Signalization System Design And Manufacturing	<b>METRO İSTANBUL A.Ş.</b> Metro Istanbul Co. 
148	Parking Lot Management Technological/Mechanical Park Installation/Management	<b>İSPARK A.Ş.</b> Istanbul Parking Enterprises Co. 



# CONSTRUCTION







## İSTON A.Ş.

### Istanbul Concrete Elements and Ready Mixed Concrete Factories Co.

İSTON A.Ş. was founded in 1986 by Istanbul Metropolitan Municipality in order to deliver qualified solutions to the city's infrastructure and superstructure needs. İSTON A.Ş. has been offering products and services to other cities of Turkey, as well as Istanbul; and through exports it also caters to other cities of the world. Along with the production of concrete, reinforced concrete pipe, cobblestone-curbs, ready-mixed concrete, industrial prefabricated structure components, urban industrial structures, urban furniture, İSTON A.Ş. also provides contractor and project services. Having been listed among Turkey's largest 500 industrial enterprises, İSTON A.Ş. delivers services to public institutions, as well as the private sector. With its current manufacturing technology, product variety, and superior quality standards, İSTON A.Ş. has been a leader in the building sector.

Owner of the ISO 9001-2000 Quality Management System certificate, İSTON A.Ş. produces all of its outputs in accordance with the TS quality standards. Under consistent control, and having acquired a TURKAK-approved international accreditation, the production quality at İSTON A.Ş. laboratories also cater for the testing needs of the construction sector as well as universities. In its facilities, İSTON A.Ş. implements the TS 1800 Occupational Health and Safety Management System, as well as the TS EN ISO 14000 Environmental Management System and Quality Assurance System.

İSTON A.Ş. is not only pioneers in the development of construction sector, but also brings in new technologies to our country thanks to its strong R&D team, design staff, and collaborations it carried through with the academic circles. All of İSTON A.Ş. activities are towards creating domains of modern life, and its products and services have greatly contributed to the development of an urban total quality process in terms of their functions and design power.

+90 (212) 537 82 00

[www.iston.istanbul](http://www.iston.istanbul)

[pazarlama@iston.istanbul](mailto:pazarlama@iston.istanbul)





İSTON A.Ş. operates in its Tuzla, Bayrampasa and Hadimkoy facilities with a total indoor space area of 61 thousand 103 sqms, and a general area total of 355 thousand 300 sqms.

Decorating avenues and streets in all Turkish cities, İSTON A.Ş. is a popular choice in several other cities of the world with its urban products, as well. At home and abroad, it offers services of architectural and static projects, urban environmental planning,

restoration projects, urban furniture designs, and industrial product design. İSTON A.Ş. products are exported to 35 countries, including Germany, Albania, Azerbaijan, United Arab Emirates, Bulgaria, France, Georgia, the Netherlands, Iraq, Iran, Switzerland, Montenegro, State of Qatar, Kazakhstan, Kosovo, Kuwait, Turkish Republic of Northern Cyprus, Libya, Lebanon, Romania, Russia, Sudan, Syria, Saudi Arabia, Tajikistan, Turkmenistan, Ukraine, Oman, Jordan, Yemen, and Greece.

İSTON A.Ş. carries out its responsibilities with a people oriented management and service mentality; while improving its competitive power in the sector with a customer-oriented approach that is based on productivity and quality. İSTON A.Ş. continues to add new urban constructional components to its range of products that is already over 1000, and it will go on to build the aesthetic cities of the future within the framework of modern urban culture.



Urban furnitures produced by İSTON A.Ş.

- Benches
- Planters
- Litter Bins
- Bollards
- Tables, Pergolas, and Arbors
- Playground Equipments
- Dog Training Park
- Skate park and pumptrack
- Cobblestone and curbs





**Benches** are the first urban outfits of city life. They began to serve an even more important purpose as the pace of life gradually increased in the cities. İSTON A.Ş. designs highlight comfort and aesthetic for those moments where urbanites need a break. It conveys a quality that accompanies all residents of the city in their moments of pleasure.

Benches help us bring peacefulness, comfort and modernity to wherever they are, as they are the indispensable component of future urban design. Having set out to transform every place, particularly

Istanbul, into habitable spaces of the future, benches of İSTON A.Ş., made out of metal, concrete and wood materials, add aesthetic and quality to the cities with their design, practicality, and comfort.

What a blessing it is to live in a clean environment... Who wouldn't want to leave next generations with an immaculate world, with clean air, water and soil? Environmental friendly **İSTON A.Ş. Litter Bins**, a must-have of urban life, are right where you need them to be, with designs and product range that complement various different urban spaces.



The biggest problems people experience in cities are stress, flocks of people and noise. In such an environment, people sometimes long to see some green during that tiresome pace between work and home. We know countryside may not always be a possibility. But it is now possible to experience the smell of green nature and colorful flowers in every street, avenue, and park in the city, thanks to the **İSTON A.Ş. Planters**. Adding color and aesthetics to everywhere they are located, İSTON A.Ş. Planters offers the naturality that is desperately needed in cities with rapid urbanization, by creating a habitat for yellows, reds, pinks, and many more colors.







**İSTON A.Ş. Bollards** that are used as security bands in places like sidewalks, parks and shopping malls where the population is dense, perform their function in the city life without creating any visual pollution thanks to their range below the eye-level.

Optionally, İSTON A.Ş. Bollards can be linked to each other by a chain; and they add stability and aesthetic to the borders of life with their various color options and modern designs to protect public property.



When urbanites get away from the busy pace of the city and meet nature, **İSTON A.Ş. Tables** welcome them earnestly.

Pergolas and arbors where neighbors get together, or lovers meet and spend hours hand in hand under their shade, or where you, at times, take refuge from the rain... They are the all-season peaceful shelters of a modern city culture. Made from wood, which is the most natural and the healthiest of materials, **İSTON A.Ş. Arbors and Pergolas** were designed to carry over the comfort and serenity of a home to parks and gardens.







**İSTON A.Ş. Playground Equipments** offer children a colorful and safe recreational area, and prepares them for life in an entertaining fashion with its slides, spring toys, seesaws and more to improve motor skills and coordination where they can functionally and educationally improve themselves. Environmental-friendly İSTON A.Ş. Playground Equipments are

produced with natural materials that are sensitive towards child health.

We design and manufacture the **Dog Training Park** equipped with 11 different game elements where our best buds can beat out their stress and fatigue as they get trained and thus get to know themselves better while having fun as well.



We are now introducing our cities with concrete **Skate Parks and Pumptracks** where you can perform your sports activities like skating, blading and cycling, helping you forget about the intensity and tediousness of life, and set aside time for yourself.







Offering you comfort, ease and order in every step, and designed in various different sizes, textures and colors, **İSTON A.Ş. Cobblestones and Curbstones** bring aesthetic and quality under your feet, literally. Environment and eco-friendly İSTON A.Ş. Cobblestones and Curbstones offer quite practical indoors and outdoors solutions to all sorts of spatial and environmental planning. Strong and durable, İSTON A.Ş. Cobblestones and Curbstones present safety against all types of weather conditions, and contributes to the urban aesthetic development with its decorative colors and wide range of areas of application.







## KİPTAŞ

### Istanbul Residence Development Plan Industry and Trade Co.

KİPTAŞ was founded under the name of İMAR WEIDLEPLAN in 1987 for the purpose of executing development and architectural projects with foreign capital partnerships. An affiliate company of the Istanbul Metropolitan Municipality, KİPTAŞ completed its foundation in March 8, 1995, and was restructured under the title of İstanbul Konut İmar Plan Sanayi ve Ticaret A.Ş.

Being an affiliate of the municipality, KİPTAŞ constructed around 75 thousand residences within the scope of its projects carried out in various districts of Istanbul. Even though it is mainly specialized in residential buildings, it also offers services in the areas of urban transformation, real estate development, and consultancy.

The new management of KİPTAŞ took office in August 2019, and has been identifying business models that maximizes social utility in accordance with the company's foundational mission. The new KİPTAŞ management has organized public auctions for the first time in the company history. In these auctions, real estates in the company fund were sold by public auctions, where online offers were made available.

Due to a probable Istanbul earthquake, KİPTAŞ took an active role in the transformation of risky buildings and their reconstructions, while prioritizing home owners who have risky structure reports at its real estate public auctions. The sales campaign it implemented aimed at setting an example to different institutions and organizations in transferring the people of Istanbul who live in risky houses into safe structures. Furthermore, a model towards the efficient use of the current structure stock was also materialized.

Determining the housing policies of the IMM, KİPTAŞ devise projects that aim at resolving housing problem. Its mission is to create safe and quality living spaces with parking lots, social areas, disaster assembly areas, and green areas in every appropriate building plot for those who are in need.

+90 (212) 414 98 98

[www.kiptas.istanbul](http://www.kiptas.istanbul)

[bilgi@kiptas.com.tr](mailto:bilgi@kiptas.com.tr)





#### KİPTAŞ SILIVRI 4th PHASE SOCIAL HOUSES

KİPTAŞ focuses on the construction of the social residence project in Silivri, employing its innovative vision and a qualified sense of architectural design. Being far from the standard social housing in terms of its style and format, Silivri 4th Phase Social Houses are quite modern with its design and architecture, and it has 1396 flats in a

total of 32 blocks, 474 of which has 3 rooms with open kitchen with an average gross floor area of 86 sq m; 702 of which have 3 rooms including a separate kitchen with an area of 92 sq m; 220 of which are 3+1 with an area of 111 Sq m. As part of the project 50 street-level shops and a daycare is currently under construction. With its qualified and innovative design, Silivri 4th Phase Project winners of the 2020 IDA International Design

Awards. During a 3-week online book-building, the project received more than 40 thousand applications, reaching up to the highest number of applications in the district of Silivri. The project created a privileged group category, which included the families of martyrs, disabled people due to war or occupation, as well as widows and orphans, and allocated residences for them.



#### KİPTAŞ İZMİT ÇINAR HOUSES

The foundations were laid in December 28, 2020 for the Arizli Neighborhood "KİPTAŞ İzmit Çınar Houses" project, implemented by KİPTAŞ in collaboration with İzmit Municipality. Designed with a vision to improve İzmit's durable structure stock, and to construct high quality,

modern and accessible cost-efficient housing project, KİPTAŞ İzmit Çınar Houses Project is comprised of 4 blocks, 143 houses and 5 commercial units, combining a new generation cost-efficient housing with a boutique sense of living. The project became a model for collaboration between public institutions, as well as for rapid production

of solutions, and it includes a total of 143 residences, 37 of which are 2+1 garden level units with an average gross floor area of 87sq m; 66 of which are middle-floor, 93 sq m 2+1 units; and 40 of which are 124 sq m 3+1 units. Promising a nature-friendly life, the project includes a parking lot, playgrounds, and high level landscaping.





### KİPTAŞ EYUPSULTAN YESILPINAR SOCIAL HOUSES

KİPTAŞ Eyupsultan Yesilpinar Residences is an in-situ transformation project that will add value to the region it is situated in, with its social fittings and green areas that are design-oriented and removed from dense housing. Declared as risky in 2016, the region had been suffering from an ownership prob-

lem for about 50 years; and KİPTAŞ resolved all these problems in just 18 months and started the construction of the project. The project has an open site design with green areas, playgrounds and community areas. A daycare, a library, and a primary healthcare clinic will be built as part of the project; and all of these areas will also be accessible to every resident of the Eyupsultan

Yesilpinar Neighborhood. KİPTAŞ Eyupsultan Yesilpinar Residences is an urban transformation project with an exemplary process management from reconciliation to architectural design, as it came to a complete agreement with 192 independent sections and 159 beneficiaries, and laid its foundations in May 25, 2021 with the participation of the beneficiaries.



### KİPTAŞ TUZLA SQUARE SOCIAL HOUSES

Being the third cost-efficient housing project of KİPTAŞ' new management, KİPTAŞ Tuzla Square Social Houses is comprised of 149 residences and 9 commercial units. Thanks to the grey water recycling system implemented for the first time in cost-efficient housing, a daily water saving of 20 thousand liters is projected in the KİPTAŞ

Tuzla Square Social Houses Project. This system in such an environment-friendly low-cost housing project will allow qualified waste water used in the residences to be purified and put to use in toilet reservoirs and sprinkler systems in the gardens. The projects includes a total of 5 blocks, 9 shops, and 149 residences, 23 of which are 2+1 open kitchen units with a gross gross area of 81 sq m; 73 of which are 94 sq m 2+1

enclosed kitchen units; 53 of which are 105 sq m 3+1 units. During the 2-week online collection of requests, the project received more than 40 thousand applications, the project attracted a great deal of attention. The project created a privileged group category, which included the families of martyrs, disabled people due to war or occupation, widows and orphans, as well as healthcare workers, and allocated housing for them.





#### KİPTAŞ BAĞCILAR KIRAZ RESIDENCES

Another urban transformation project of KİPTAŞ, KİPTAŞ Bağcılar Kiraz Residences' foundations were laid on June 30, 2021. Before starting the construction of the new project, the risky structures at the As Fatih complex, which consisted of 4 blocks and 190 independent

units that were declared risky in 2017, were demolished after coming to an agreement with the residents and evacuation the buildings. This new project will be composed of 4 blocks and 250 units. The gated community will have 3 entrances; and it will have 164 3+1 units, 82 2+1 units, and 4 1+1 units. The public square at the center of the blocks will be equipped with

various landscaping elements, such as a playground, sports equipments and sitting areas, as well as a decorative pool. The two-storey social facility building will also be here, while the two-storey indoor parking garages that will be constructed under the blocks and under the public square will allocate a parking space for each unit.







## İSFALT A.Ş. Istanbul Asphalt Co.

İSFALT A.Ş. was founded in 1986 in order to meet the asphalt needs of Istanbul Metropolitan Municipality and the district municipalities. The company fulfills this mission through production in its factories built on both shores of Istanbul, while delivering its services across the country with a well-developed technical staff. Improving itself over the years, our company succeeded in becoming one of Turkey's largest 500 industrial establishments, as well as the brand for safe and comfortable drives thanks to our products and services.

Always prioritizing quality, İSFALT A.Ş. produces asphalt in a total of 11 plants at 4 different factories it owns, all of which are equipped with advanced technologies. Our company carries out its productions and implementations within the framework of the TSE Certificate of Quality, ISO 9001:2015 Quality Management System, ISO 14001:2015 Environmental Management system, ISO 45001:2018 Occupational Health and Safety Management System, and the CE European Document of Conformity and Quality, that we earned.

Founded with a mission to produce asphalt, İSFALT A.Ş. has widened its array of activities following the addition of asphalt application, divided road works, stack interchange construction, lab services, recycle activities, training activities, and consultancy services.

Our company continues its emphatic progress towards its goals anywhere with asphalt production and application, employing its quality, speed and knowledge.

+90 (212) 342 24 92

[www.isfalt.istanbul](http://www.isfalt.istanbul)

[isfalt@isfalt.istanbul](mailto:isfalt@isfalt.istanbul)





**Ready Asphalt** is a cold asphalt mix that can be processed even in cold weathers, and it is used to repair potholes. It is the kind of mixed cold asphalt that is practically used in repairing the potholes and deteriorations on concrete and asphalt surfaces, with no need for heat or compression. It is used in urban roads, express ways, factories, hospitals, schools, hotels, recreational facilities, playgrounds, indoor and outdoor parking lots, as well as in

chimneys, grids, and corners of manholes. It is used for repair purposes where there is inconvenient weather conditions, or where repairs are not possible due to hot asphalt. It should be considered as a permanent solution in areas closed to traffic, while it should be temporary in areas of traffic.

-It does not require a specialized team or equipment.

-It can be laid easily without heating up.  
-Thanks to its all-season quality, it offers practical solutions to small areas.

-Areas where ready asphalt is laid can immediately be opened to traffic.  
-Since it does not contain volatile solvents, it is not harmful to the environment and humans.  
-It has a 6-month shelf-life.



**IS-COAT** is an insulant material that is applied hot, and it does not produce air bubbles and ruptures when heated up; and through its consistent flow, it maintains consistency to be poured in a way that completely fills up the area of application. It prevents influx of water from cracks in between the asphalt coatings, and this way removes problems caused by water and humidity. It is used for insulation works in highways, urban roads, airports,

bridges, parking lots, and viaducts. It preserves its performance even during temperature differences, humidity increase, and under dense traffic.

**IS-SEAL 10** is a hot-applied, bitumen-based padding material that is modified through various additives in order to improve its elasticity and adhesion performance, and used in repairs of cracks, and grouting jobs. It is successfully used in crack repairs and grouting jobs in

highways, urban roads, bridges and viaducts. In order to improve the service life of a coating, it is used for grouts, and for hairline or wider cracks that occurred due to weather conditions and vehicle loads. Failing to repair such structures creates larger costs and need for labor. The purpose of using IS-SEAL 10 is to prevent mechanical deteriorations or those that may occur due to water. Produced hot, IS-SEAL 10 is then packed and cooled, and sold in 18-kg tin cans.





## BİMTAŞ

**Istanbul Engineering and Consultancy Services Co.**

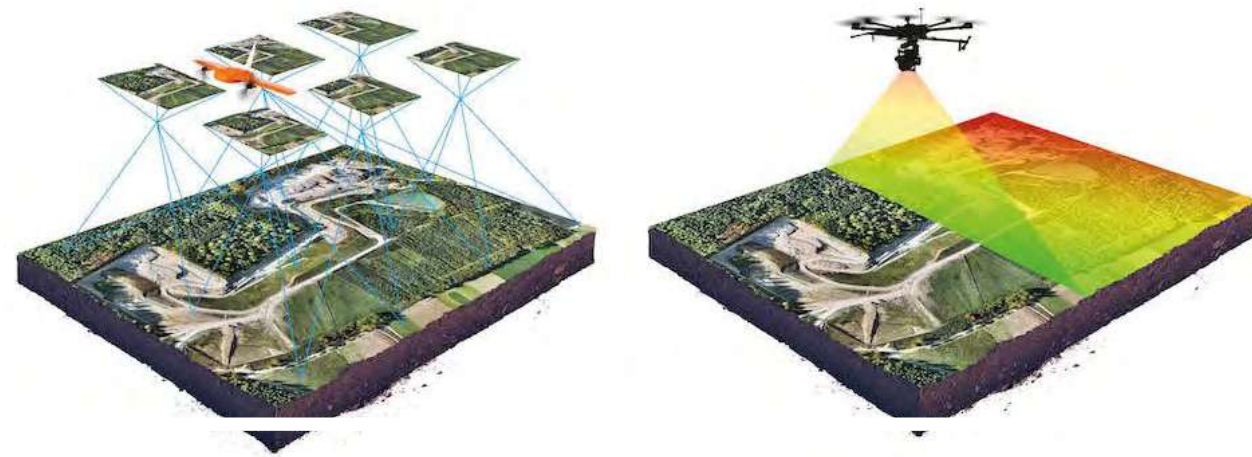
BİMTAŞ A.Ş. carries on its works in order to make Istanbul, one of world's most important metropolis, greener, more fair and creative; while employing high-end technologies in order to meet the demands of private sector that provides feasibility, survey, project, consultancy services in all areas of life -from city planning services to infrastructure, urban development to transportation, energy to subway systems, industrial facilities to cultural centers, and sports complexes to park and garden arrangements- to national and foreign local authorities, as well as to the private sector that provides services to these local authorities.

+90 (212) 245 9900

[www.bimtas.istanbul](http://www.bimtas.istanbul)

[bimtas@bimtas.istanbul](mailto:bimtas@bimtas.istanbul)





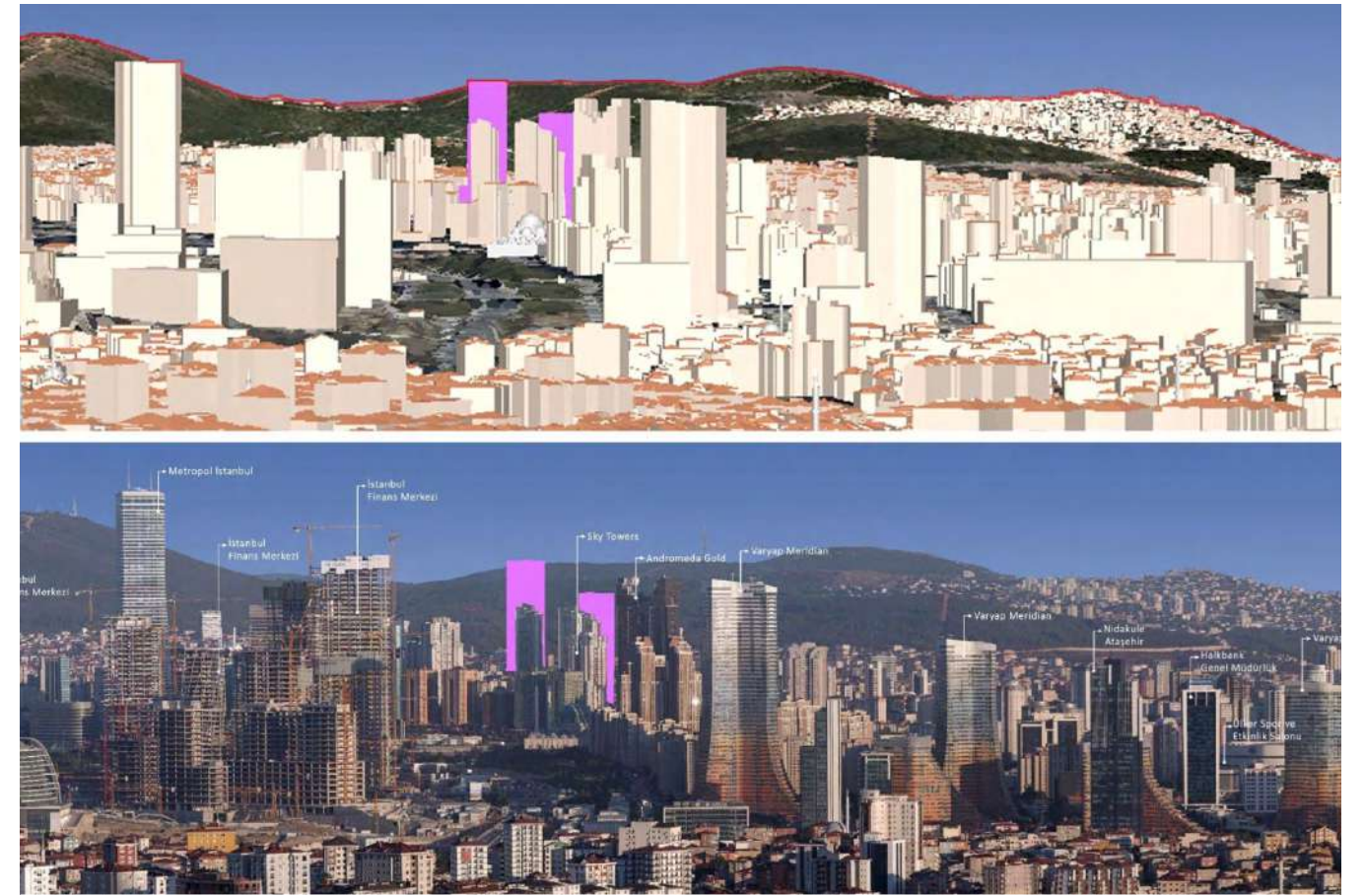
BİMTAŞ uses laser scanning technologies to create 3D solid models, from architectural detail scales to urban model scales, depending on the intended purpose. These solid models that can be produced in every scale, are then made smart and integrated into the geographical information system.

Within the scope of the urban and regional planning, visional and strategic planning works on an urban and district scale, tourism plans and shore plans and master

plans in this direction, action plans, analytical survey works, site selection works and management plans within the framework of sectoral needs, spatial planning, and rural area planning works are conducted. In line with urban design projects, works with regards to urban aesthetics, square and open green area designs, and silhouette works are carried out.

All planning processes include participation model development works as well.

Advanced technology mapping works are developed, and weather and mobile lidar projects are enhanced. Works and analyses are developed in the area of geographical information systems (GIS), infrastructure and super structure projects are integrated into the GIS. Photogrammetric mapping, numeric terrain models, surface models and three dimensional city models are produced. Visibility (silhouette) analyses are performed through three dimensional city models.



Within the scope of panoramic imagery services, 360° panoramic images of all avenues and streets of the city are produced using lidar data, while laser scanning method is used to create panoramic images of indoor and outdoor spaces. Web-based visualization and broadcast

services are also offered.

Furthermore, the company also performs building survey, restitution and restoration projects of monuments and buildings that are examples of registered civil architecture. City-scale

architectural and cultural heritage inventory works are finalized with planning activities for protection purposes, in order to renew and preserve the heritage, and to sustain them through putting them into use.





## İSTANBUL İMAR A.Ş. Istanbul Reconstruction Co.

Founded in 1947 with a fifty-fifty partnership between Istanbul Municipality and the Turkey Emlak Kredi Bank, İSTANBUL İMAR A.Ş. has started with the idea of reconstructing Istanbul. As stated in the articles of incorporation, in order to actualize Istanbul's proposed structuring through development plans, it included in its domain both new areas of development, and the (confiscated) neighborhoods that are developed in an unplanned fashion and/or districts that are subject to urban transformation. Meanwhile, one of its primary duties is to construct/administer the construction of all kinds of public and private structures that the city needs. The articles of incorporation also refers to Istanbul İmar's future partnerships with local and foreign individuals/companies.

Throughout the 40 years following its foundation, it introduced more than 120 monuments large and small, and built or administrated the construction of various buildings all around Istanbul.

Following the decision taken in 2012, the articles of incorporation changed, and İstanbul İmar A.Ş. is planned to be transformed into a Real Estate Investment Trust. With this transformation, the real estate owned by the IMM will be used;

- to finance the urban transformation process in Istanbul without appealing to the cash resources of the IMM,
- to make fund transfer to the IMM by purchasing real estate owned by the IMM for their actual worth, following the capital inflow emerged after a successful public offering,
- and to transfer profit share annually to the IMM.

In this regard, a set of real estate was transferred in 2016 to İstanbul İmar A.Ş. as real capital.

In 2019, 72 years after its foundation, İstanbul İmar A.Ş. accelerated its works with a mission to take responsibility in the redevelopment of the city, and to take part in the Urban Transformation processes. With its strong economic structure, many years of vast knowledge, and its brand value, it will actively participate in the Urban Transformation processes in Istanbul.

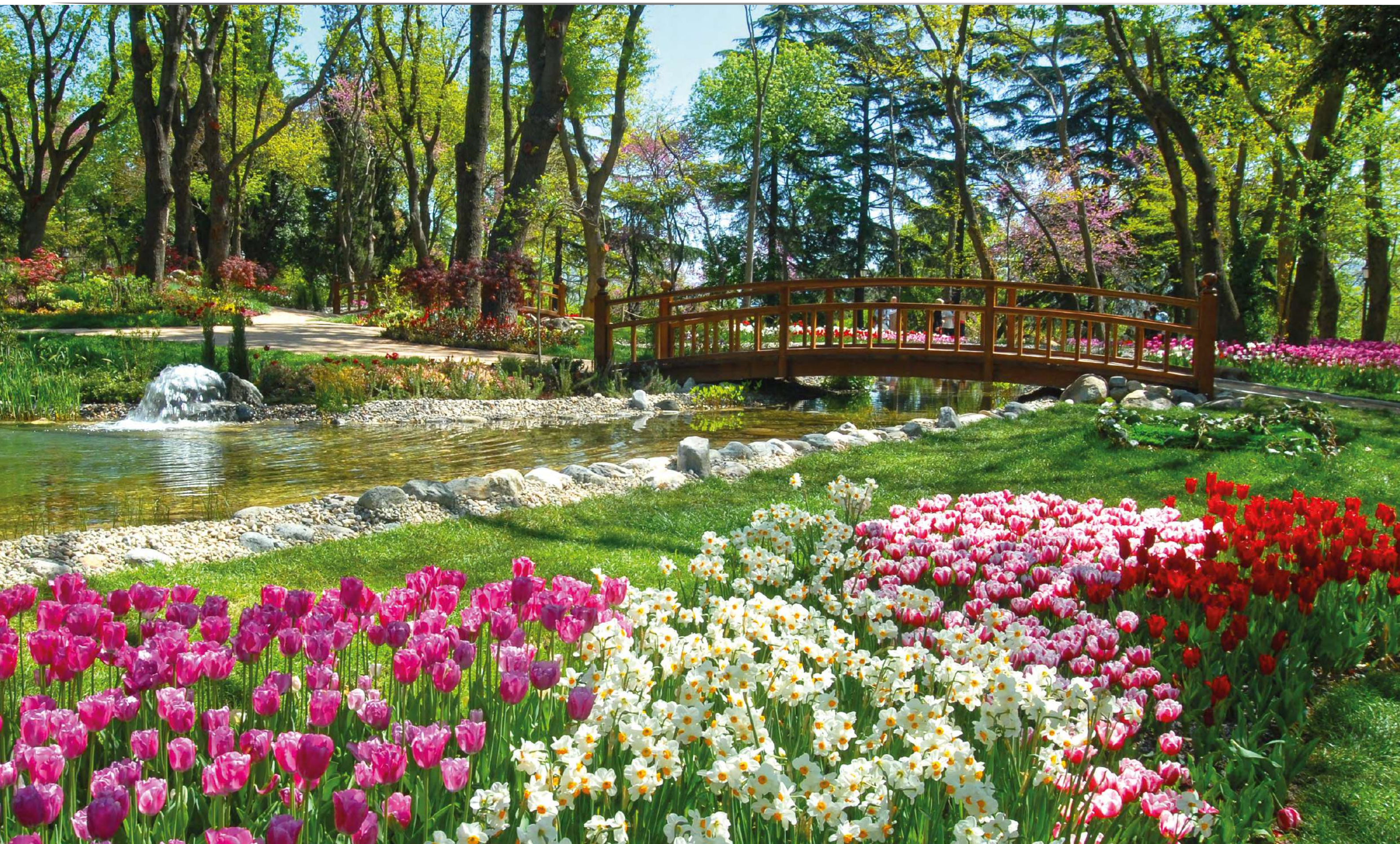
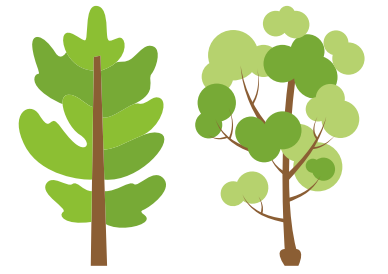
+90 (212) 274 19 48

[www.imar.istanbul](http://www.imar.istanbul)

[imar@imar.istanbul](mailto:imar@imar.istanbul)



# ENVIRONMENT







## AĞAÇ VE PEYZAJ A.Ş.

### Istanbul Tree and Landscape Co.

Istanbul Ağaç ve Peyzaj A.Ş. was founded in 1997 as an affiliate of the Istanbul Metropolitan Municipality in order to manage Istanbul's green area works, meet the needs for trees and decorative plants, as well as to conduct scientific research studies on this topic.

Since the very beginning, it took considerable steps in terms of changing the point of view of the citizens of Istanbul towards green, nature, trees, and flowers. Especially in recent years, it created solutions to allow our people to spend more time in green areas, and take advantage of these places.

Aside from environmental planning and landscaping projects and implementations, Istanbul Ağaç ve Peyzaj A.Ş. also takes care of the supply of quality plants that the sector needs, produces and sells landscaping materials. Currently the Ağaç ve Peyzaj A.Ş. maintains approximately 70 million square meters of green space in Istanbul, while at the same time ensures that these spaces are always filled with the colorful flowers of the season. It also locates water basins, as well as all other areas that are appropriate for planting trees.

Sturdier types that require less water are more favorable for the endemic structure of the city, and thus are preferred in forestation and planting seasonal flowers.

The quality of life of Istanbulites has increased thanks to the city forests and valleys of life. We are endorsing human-oriented projects, making sure that our children will live in a greener, cleaner, and more livable Istanbul.

Garden Markets, a first in Turkey, have become the first store chain in the retail area, where plants meet people; while Turkey's largest Garden Market was founded in Alibeykoy. Now, the people of Istanbul are able to find all kinds of decorative plants, tree and fruit saplings in our Garden Markets.

In the vegetable soil production facilities, Istanbul Ağaç ve Peyzaj A.Ş. produces fertile soil for the landscaping areas by recycling excavation soil while it maintains its efforts as the leader of the sector with landscaping project applications, quality products, and its expert staff.

Conducting its works according to the principles of constant change, supporting local manufacturers, and preserving ecological balance in city landscaping, Istanbul Ağaç ve Peyzaj A.Ş. continues to provide quality products and services to the public, and to improve sectoral standards through exemplary and pioneering works across the world.

+90 (212) 600 00 00  
www.agac.istanbul  
bilgi@agac.istanbul





The parks and green spaces, which have been newly built and reorganized by Istanbul Tree and Landscape Co. allow the people of the city take some fresh air. Ağaç ve Peyzaj A.Ş. encourages the production of tulip bulbs, seasonal flowers and rose, which in turn creates new areas of employment. Grown by villagers, tulips decorate Istanbul with their fascinating beauty and aesthetics that turn into a symphony of colors. Every spring, the Istanbul Tulip Festival brings tulips to the people of Istanbul, and significantly contributes to tourism.

Aside from the mosaic applications with plants, wall garden applications that make backgrounds more colorful are highly recognized and appreciated. These successful works executed by Istanbul Ağaç ve Peyzaj A.Ş. are also followed by several other countries. Centralized and local executives are visit Istanbul to see these applications.

#### ACTIVITIES AND APPLICATIONS

For the people of Istanbul, preserving and maintaining green

spaces is equally important as creating them. With that in mind, we conduct regular maintenance work over city landscaping, allowing the people of the city to take pleasure in living in an always green and nature-friendly Istanbul.

#### WHAT DO WE DO?

- We maintain the current green spaces in Istanbul, while creating new ones as well.
- With the Garden Markets, we offer everything there is about garden



to the sector and the public.

-We prepare landscaping projects that improve the aesthetic value of the city; establish parks, green space arrangements by the roads and intersections, life valleys, and water basin forestation.

-At the Alibeykoy and Pendik Nurseries, the largest base for potted plant production and logistics in Turkey, we have a wide variety of decorative outdoor plants like trees and shrubs in our nurseries, and we manage the

transportation and management of Istanbul's landscaping needs, as well as the sector at large.

-We carry on works to add more green spaces countrywide, especially in Istanbul.

-By recycling excavation soil, we produce fertile soil for the landscaping areas.

-In order to create an awareness around the environment, we conduct some activities.  
-We perform R&D studies for

quality production with high standards.

-We arrange for seasonal flower and rose production via cooperatives in order to be used in the landscaping applications at Istanbul's parks and gardens, therefore contribute to employment.

-In collaboration with the Yalova Atatürk Horticultural Central Research Institute, we bring local and patented rose varieties into the landscape through our Rose Improvement Project.





Throughout Istanbul, we are materializing future-oriented designs that also cater today's needs in the projects we run in an area of 70 million square meters. For a greener and nature-friendly Istanbul, we pay closer attention to the production and supply of quality plants needed in our projects. In that regard, we consider these plants in our nurseries as the centuries-old trees of the future, and dote upon them until they are planted.

#### ALIBEYKOY NURSERY

Set in an area of 185 thousand

square meters, Alibeykoy Nursery has a capacity of 520 thousand potted plants, making it the largest nursery of Turkey. With its modern facilities, expert staff, and the technology it uses, this leading nursery in its area exercises plant potting, maintenance and plant forming. In addition, the nursery houses Turkey's first Herbal Soil Production Facility set in an area of 22 thousand square meters, with an annual herbal compost production capacity of 400,000 cubic meters. With its infrastructure, logistical and technological equipment, Alibeykoy Nursery keeps advancing its activities as a modern nursery

beyond European standards.

#### PENDIK NURSERY

Set in an area of 124 thousand square meters, and with a potted plant capacity of 315 thousand, Pendik Nursery meets tree and decorative plant needs of the Anatolian Side. Set in an area of 20 thousand square meters, the Vegetable Soil Production Facility, with an annual production capacity of 200,000 cubic meters, processes excavation soil, and turn it into vegetable compost to be used in landscaping. In line with exporting our company's products



to the Middle Eastern, Central Asian, and European markets, we have identified a competitive and aggressive sales and marketing policy with our quality products and affordable price advantages, and we aim to direct our exportation efforts planned for the following period accordingly. The variety of our products specific to the regions we can export to, as well as our logistical infrastructure, we have the capacity to deliver the best services to regions that request them, with the fastest way

possible. We have a total of over 40,000 plants of 52 different types in our potted plant reservoir.

#### Some of our possible export products:

ACER CAMPESTRE  
ACER NEGUNDO  
ACER PLATANOIDES  
ACER SACCHARUM  
BETULA ALBA  
CELTIS AUSTRALIS  
CUPRESSOCYPARIS LEYLANDII  
FRAXINUS AMERICANA

FRAXINUS EXCELSIOR  
LAGERSTROMIA INDICA  
LIGUSTRUM JAPONICA  
LIQUIDAMBAR ORIENTALIS  
LIQUIDAMBAR STYRACIFLUA  
MALUS FLORIBUNDA  
MORUS ALBA "GLOBOSUM"  
MORUS NIGRA "PENDULA"  
MORUS PLATANIFOLIA  
PLATANUS ACERIFOLIA  
PLATANUS OCCIDENTALIS  
PLATANUS ORIENTALIS  
PRUNUS SERRULATA "KANZAN"  
PENDULA  
PYRUS CALLERYANA





**Some of our possible export products:**

'CAHANTICLEER'  
QUERCUS CERRIS  
QUERCUS PALUSTRIS  
QUERCUS ROBUR  
QUERCUS RUBRA  
TILIA AMERICANA  
TILIA CORDATA  
TILIA EUROPA PALLIDA  
TILIA PLATYPHYLLOS  
TILIA TOMENTOSA



**GARDEN MARKET**

Istanbul Ağaç ve Peyzaj A.Ş. (Istanbul Tree and Landscape Co) put Garden Market into service in 2011, a first in Turkey, the market brought along to the landscaping sector a new understanding in sales. The Garden Market is founded at the Alibeykoy Nursery on an area of 13,800 square meters with an indoors space of 1,221 square metres\ and it carries out retail sales and wholesale.

Providing services with a motto of "everything to do with a garden"

Garden Market carries a total of 4,500 types of different products, from indoors and outdoors decorative plants to fruit trees, from landscaping materials to garden equipment.

In order to add new Garden Markets to the already growing number of garden markets, we established the necessary projects. This way, the people of Istanbul will have easier access to the closest Garden Market. Garden Markets have become a place where our people can take a breather and shop with pleasure.







## İSTAC A.Ş.

### Istanbul Environment Management Industry and Trade Co.

We have a promise for a sustainable future.

Founded in 1994 as an affiliation of Istanbul Metropolitan Municipality, İSTAC A.Ş. provides services in the fields of waste and environmental management in order to hand down liveable cities to future generations.

In order to prevent the environmental damages caused by waste generation, which accelerates with the increase in the amount of population and individual waste, as much as possible, to protect nature by reducing the use of limited natural resources, and to reduce the waste-based greenhouse gas emissions; İSTAC A.Ş. primarily carries out below activities;

- Construction and operation of transfer stations and landfill sites
- Municipal solid waste transportation and management
- Medical waste management
- Industrial waste management
- Excavation, construction, and demolition waste management
- City and wholesale market hall cleaning
- Sea surface and coastal clean-up
- Landfill Gas (LFG) to energy solutions
- Landfill leachate management
- Mechanical Biological Treatment (MBT) operation including compost production from organic waste
- Recycling of packaging waste
- Production of Refuse Derived Fuel (RDF)
- The management of ship-generated waste (under MARPOL rules)
- R&D services

With more than 25 years of experience and knowledge, İSTAC A.Ş. provides consultancy, construction, and management services to national and international public and private institutions; and aims at incorporating more institutions into the circular economy.

İSTAC A.Ş. takes on responsibilities for liveable cities and the sustainable planet with over 60 operating units and more than 4,300 employees, continues its investments with its transparent corporate culture, safety priority as well as its principle of honesty to keep taking clean steps toward the future.

+90 (212) 368 26 00

[www.istac.istanbul](http://www.istac.istanbul)

[istac@istac.istanbul](mailto:istac@istac.istanbul)





## 1. CONSTRUCTION AND CONSULTANCY SERVICES

İSTAÇ A.Ş. assesses environmental problems with a holistic point of view and successfully carries out consultancy services on a national and international level with its competent and expert team of engineers.

The objective of İSTAÇ A.Ş.'s consultancy projects is to ensure the establishment of integrated waste management systems that employ the most appropriate method, strategy, and technology based on national and international norms. It channels the technical

know-how and experience to the public and private sector with its national and international consultancy projects.

### PREPARATION OF INTEGRATED WASTE MANAGEMENT PLAN

Waste management current situation analysis, waste characterizations studies, population & waste projections are made, and suitable integrated waste management scenarios are created for the regions. Following the customized scenarios; facility site selection and the cost of investment are determined.

### PREPARATION OF CLIMATE ACTION PLAN

Greenhouse gas inventory is prepared for the greenhouse gas reduction studies and the climate change risks in the region are revealed as part of the compatibility works. Through prioritization works, within the framework of international and national climate policies, climate change scenarios are established, and opportunities are identified within the scope of these scenarios, followed by vulnerability analysis. Basic approximation strategies are established within the framework of uncertainties and the while



applications of local administration, while stakeholders are encouraged to participate in emission reduction and taking approximation precautions. A climate action plan is prepared based on sector-based financing, technology/capacity development, and cost-benefit analysis.

### FEASIBILITY, FACILITY DESIGN AND PROJECT SERVICES

Feasibility reports for the planned investments include the evaluation of facility-based risks and alternatives, profitability, and financial analyses to design a facility that is appropriate for

the current criteria as well as the conditions of the region. In that regard, process flow, layout plan, concept design, and working drawings are prepared.

### CONSULTANCY SERVICES FOR FACILITY CONSTRUCTION AND OPERATION

Consultancy services are given for waste management facilities during construction and operation phase in national and international projects. The service includes creating topographical maps and soil survey, preparation of the working drawings, construction of the facilities, providing materials

and equipment, commissioning, getting approval from relevant organizations, licensing, preparing operation plans, and warranty processes.

### CONSTRUCTION OF LANDFILL SITE AND REHABILITATION OF DUMPSITES

Construction of landfill sites involves appropriate site selection, soil survey, design, construction drawings, lot construction, LFG and landfill leachate management, conducting the licensing process and operation. Dumpsites require choosing the appropriate rehabilitation appropriate





rehabilitation method, project design, LFG and landfill leachate management laying out topsoil, and installation of a fence around the rehabilitation area.

#### MECHANICAL BIOLOGICAL TREATMENT FACILITY (MBT)

With more than 25 years of operation management experience, İSTAÇ A.Ş. offers feasibility study, equipment selection, process management plan, project design and operation consultancy services in the MBT facilities.

#### TRANSFER STATION

İSTAÇ A.Ş. offers services in waste transport optimization, selection of transfer station location, evaluation of equipment and vehicle options, design, construction, and controlling services for facilities.

#### MEDICAL WASTE INCINERATION AND STERILIZATION FACILITIES

İSTAÇ A.Ş. offers consultancy in the design, construction and operation of the facilities in accordance with the most appropriate methods for medical waste management,

as well as services in collection optimization and operational training.

#### LANDFILL LEACHATE TREATMENT PLANT

With its experience in operating Europe's largest leachate treatment (LT) plants, İSTAÇ A.Ş. offers services in identifying the characteristics of leachate, process calculations, plant designs, identification of the appropriate treatment methods, as well as training in plant operation.



#### PORT RECEPTION FACILITY

With its experience in serving approximately 8.000 ships annually, İSTAÇ A.Ş. makes for feasibility study and design, and gives services for construction and operation of the port reception facilities under the most appropriate methods as well as operational training services according to MARPOL rules.

#### SLUDGE DEWATERING FACILITY

By determining the amount of sludge to be dredged and capacity, appropriate system and equipment selection for dredging and sludge dewatering, investment and oper-

ating cost analyzes of the facility are made by İSTAÇ A.Ş.

#### WASTE TO ENERGY PLANTS (WTE)

İSTAÇ A.Ş. provides consultancy services for Waste to Energy Plants (biomethanization, incineration technologies, etc.) including the feasibility, design, construction, operation, and commissioning of the facilities.

#### 2. TRAINING AND AWARENESS ACTIVITIES

İSTAÇ A.Ş., emphasizes training activities to improve public aware-

ness, individual responsibility, and sensitivity to the environment by acting as an important bridge to transfer its environmental and waste management knowledge to the public with national and international congresses, symposiums, training, and seminar programs. İSTAÇ A.Ş. continuously transfers its knowledge and experience to the masses through well-attended meetings in order to create environmental awareness. Thanks to over 30 activities organized until today, waste management has been tackled with its theoretical and practical aspects with the participation of the audience.





### 3. CARBON TRADING

The LFG, which is generated from the municipal solid waste landfills, and comprise more than 50% methane gas and is 28 times more harmful than carbon dioxide when released into the atmosphere according to the Fifth Assessment Report of the Intergovernmental Panel on Climate Change (IPCC), is transformed into electrical energy in energy production from LFG facilities by used in gas motors in European and Asian side of Istanbul, thus prevent its release into the atmosphere since 2010.

The project registered by Gold Standard and developed in line with the United Nations' Sustainable Development Goals of "Good Health and Well-Being", "Affordable and Clean Energy", "Responsible Consumption and Production" and "Climate Action" since 2010. The energy production from LFG facilities have been annually producing approximately 1,5 million tons of carbon credit.

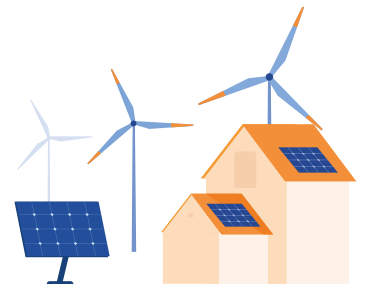
İSTAÇ A.Ş. will contribute to the United Nations' Sustainable Development Goals of "Affordable and Clean Energy", "Decent

Work and Economic Growth" and "Climate Action" with its Landfill Gas Energy Production Facility which started operation in 2020 in Silivri District, as well as Kemberburgaz Waste to Energy Plant and Kemberburgaz Biomethanization Plant to be started operation in 2021. With these facilities, İSTAÇ A.Ş. is going to have approximately 4,5 million tons of carbon credits annually and become one of the leading companies producing carbon credits in Turkey.





# ENERGY







## İGDAŞ

**Istanbul Gas Distribution Industry and Trade Inc.Co.**

İGDAŞ was founded in December 25, 1986 with the participation of Istanbul Metropolitan Municipality, İETT and some other affiliate companies. With İGDAŞ, Istanbul addressed its fuel need with natural gas, which is most appropriate for the environment and human health, as well as an affordable source of energy.

İGDAŞ maintains its natural gas services with a trustworthy, sustainable, innovative perspective that adds value to the environment and people's lives. It aims at becoming an exemplary company in the energy sector worldwide with a competent, environment-friendly and corporate sense of perfection.

With its 2126 employees, in 39 districts, 3 regional directorates, 21 service building, 56 cashier's offices, 32 network supervisor buildings, 2000 km steel lines, 17,000 km PE line, 5,500 km service line, and a total of 24,500 km line length, it continues to maintain uninterrupted services to its 7 million subscribers by providing 6,5 billion cubic metres of gas.

With 95.1% customer satisfaction, 82% corporate reputation, İGDAŞ is Turkey's 35th largest company, and 32nd most valuable brand, and it ranks 6th in the petrol and natural gas distribution sector; it continues to provide services to our country as the leader of natural gas sector.

+90 (212) 499 1111

[www.igdas.istanbul](http://www.igdas.istanbul)

[igdashkurumsal@igdas.istanbul](mailto:igdashkurumsal@igdas.istanbul)





## İSTANBUL ENERJİ A.Ş.

### Istanbul Energy Industry and Commerce Co.

İstanbul Enerji A.Ş. was founded in 1962 as BEL-PET with the partnership of Petrol Ofisi and Istanbul Municipality. Petrol Ofisi's shares of the company were taken over by İDO and İSFALT in 1992, making it totally an IMM establishment. In 2006, the company name was changed into İstanbul Enerji Sanayi ve Ticaret Anonim Şirketi. İstanbul Enerji A.Ş. is one of İstanbul Metropolitan Municipality's 28 affiliated companies. With its 59 years of experience, the company considers the currently popular topics such as evaluation of renewable energy resources, and use of environment-friendly technologies as significant focal points. Its 3 main areas of activity are energy, lighting and fuel oil management. Within the framework of these areas of activity, it carries out solar energy systems (SES) projects, solar lighting systems, energy efficiency consultancy, biomass energy plants (BEP), electrical vehicle charging stations, wholesale&retail fuel oil supply and the lighting projects of architectural spaces & parks and gardens. In the areas of energy, lighting and fuel oil, it offers innovative and environment-friendly solutions to various institutions in both the public and private sector.

One of the areas that it took on responsibility in is increasing the popularity of use of renewable energy resources, and raising awareness on green cities and green industries. Furthermore, İstanbul Enerji A.Ş. has made environmental management one of its fundamental policies, while with the Office of Managing Climate Change Processes that it operationalized in June 2021, it geared itself towards an "just green and creative İstanbul", working hard to make İstanbul a "carbon neutral" and "climate resilient cities" by 2050. İstanbul Enerji employs about 400 personnel all of whom are specialized in the company's areas of activity.

+90 (212) 219 39 76

[www.enerji.istanbul](http://www.enerji.istanbul)

[info@enerji.istanbul](mailto:info@enerji.istanbul)





It's 3 main areas of activity are energy, lighting and fuel oil. Within the framework of these areas of activity, it carries through solar energy systems (SES) projects, solar lighting systems, energy efficiency consultancy, biomass energy plants (BEP), wind power plants (WPP), electrical vehicle charging stations, wholesale&retail fuel oil supply and the lighting projects.







## UGETAM

**Istanbul Applied Gas and Energy  
Technologies Research and Engineering  
Trade Co.**

As UGETAM, we are one of the leading companies in our country in training, licensing, testing, evaluation and inspection services. Our policies have adopted improving people's living conditions and quality as a principle, and through that we provide technical and professional support to local administrations in order to cater to national services.

We have successfully earned three (3) certificates (A-Class Institution of Evaluation; Institution for Personnel Certification; and Experiment Laboratory) from the Turkish Accreditation Agency (TURKAK). We are the very first institution to be authorized by the Vocational Qualification Authority (MYK). With this authorization, we have been performing initial licensing, third party evaluation services at the Trans-Anatolian Natural Gas Pipe Line Project (TANAP), the evaluation and identification studies of natural gas distribution companies on behalf of the Energy Market Regulatory Authority (EPDK), welding controls and accordingly the maintenance-repair operations of ISKI's Melen Pipe Line with our expert personnel using leading-edge technology.

We are swiftly pursuing our projects with our expert staff in our facilities that are equipped with cutting-edge technology, thanks to the exemplary collaborations we have established with all relevant institutions and organizations. We are training qualified human resources needed by sectors providing services within our scope, and in order to support technological works, we are offering independent and non-biased services since we are accredited in the areas of personel licensing, evaluation, experiments and calibration. In addition, we are organizing events to raise and create awareness towards improving level of quality in this area.

+90 (216) 646 0187

[www.ugetam.istanbul](http://www.ugetam.istanbul)

[ugetam@ugetam.istanbul](mailto:ugetam@ugetam.istanbul)





## INFRASTRUCTURE EVALUATION SERVICES

### AREA OF APPLICATION FOR NON-DESTRUCTIVE EVALUATION

UGETAM, with its technology and innovative approach, uses the Phased Array method that conducts 3 dimensional evaluation in non-destructive evaluation, and conducts welding controls of steel and polyethylene pipes.

Non-destructive active evaluation of polyethylene butt-weldings and sleeve weldings in water pipes is performed using the Phased Array method, while in the natural gas

sector, electrofusion welding controls are performed on the polyethylene sleeves.

When it comes to the industrial facilities, we use non-destructive methods, as well, on the facility components, pressured vessels, pipe lines, and castings and forgings.

### OUR OTHER RELEVANT SERVICES

We conduct axle, coupling shaft, and metro wheel controls using Visual Evaluation, Ultrasonic Evaluation, Liquid Penetrant Evaluation and Magnetic Particle Evaluation methods. We use the Ultrasonic Evaluation device in

order to perform the controls of rail and rail weldings.

### THIRD PARTY MONITORING SERVICES

Our 3rd Party Evaluation service includes monitoring all stages of manufacturing materials made according to the TURKAK TS EN ISO/IEC 17020 standards (like metal-polyethylene pipe, metallic plate and castings). Materials are subjected to measurement dimension controls, chemical analyses, pressure and other tests based on the TS standards as stated in our customer specifications. Additionally, all



quality reports for materials are reviewed and finally observation data are put in a report.

UGETAM has received the ISO 9001 : 2015 Quality Management, ISO 14001 : 2015 Environmental Management and ISO 45001 : 2018 Occupational Health and Safety Management certifications, and fulfilled all the conditions required for these documents.

### LICENSING

UGETAM is the very first licensing agency authorized by the

Vocational Qualifications Authority to conduct examinations and licensing according to the national qualifications.

We are active in a total of 54 vocation, 46 of which are within the scope of MYK, and 8 of which are within in the scope of TURKAK.

### TRAINING SERVICES

1. Vocational Trainings
2. Technical Trainings
3. Personal Development Trainings

### CALIBRATION SERVICES

Our calibration services includes periodic controls and verification tests for natural gas meters, heat flow meters and water meters. We conduct these tests in order ensure that these metres are working with the required values based on the reference values stated in the relevant standards.





The calibration and evaluation procedures of gas meters between the capacities of G2 and 5-G1600 are performed with high precision in our city centers by our specialized personnel, who are authorized for the repair and adjustment procedures of gas meters by our Ministry of Industry and Technology.

UGETAM has acquired the ISO 9001 : 2015 Quality Management, ISO 14001 : 2015 Environmental Management, and ISO 45001 : 2018 Occupational Health and Safety Management certificates, and fulfilled the requirements for these documents.

#### ENERGY INSPECTION SERVICES

##### OUR INSPECTION SERVICES

In the area of Natural Gas Distribution Sector Natural Gas Distribution Network, we are performing:

- 5-Year Investment Liabilities Inspection and Identification Works
- Coercive Inspection and Identification Works
- Price List Inspection and Identification Works
- Delivery Control Centers Inspection and Identification Works
- Geographical Information Systems (GIS) Inspection and Identification Works

- Emergency Action Plans Inspection and Identification Works
- Call Center Inspection and Identification Works.

##### HOT-TAP CONTINUOUS WATER SUPPLY

Hot-Tap is the operation that is performed with special connection fittings to maintain the live line, to displace the line, to shut down a line or to repair without cutting off the liquid supply.

Without cutting off the water supply, "Hot-Tap" operations are conducted on the drinking water lines in order to:



- add Insert Valve,
- Branch Ducts,
- Maintenance-repair,
- "Hot-Tap" operations in order to renew displaced equipment, and to install new equipment.

Hot-Tap operations are applied to steel pipes with a diameter up to 1000 millimeters.

UGETAM has been the first institution that employed the Hot-Tap method in pipelines through which high temperature (185-200 C) liquids pass at Geothermal Energy plants.

#### ENERGY EFFICIENCY AND RENEWABLE ENERGY

##### Wherever there is energy, there is UGETAM

- ENERGY EFFICIENCY CONSULTANCY
- RENEWABLE ENERGY
- POST WARRANTY INSPECTIONS

Institutional Entity and Smart Water Management Services

Institutional entity management is a body of software, services and systems that is used to inspect,

manage and optimize physical, technological and human resources of work units and geographical locations of institutions.

Smart water management systems ensure the processing and visualization of the data collected from equipments like sensors, actuator, meter and flowmeter via the appropriate hardware and software, and the control and management of all processes that occur until water coming from the source reaches to subscribers thanks to the designed mobile and web interfaces.





#### INFORMATION TECHNOLOGIES SERVICES

##### END-TO-END SAP CONSULTANCY

- Drawing up SAP needs analysis, identification of the road map, as well as its scope
- SAP S/4 Hana digitalization projects
- SAP S/4 Hana upgrade projects
- Consultancy, maintenance support for all SAP modules
- SAP License sales
- SAP License maintenance support

- service
- PMO support
- E-transformation (e-Invoice, e-Book, e-Archive, e-Bill, e-Signature, e-Agreement, e-Account)
- Hosting and technology consultancy, Basis services
- SAP Quality inspection
- SAP roll-out (dissemination)

##### SOFTWARE DEVELOPMENT FROM SCRATCH AND REPORTING

- Software development, project

- coordination POWER BI reporting and consolidation projects

##### PROCESS CONSULTANCY

- Process Design
- Process Consultancy

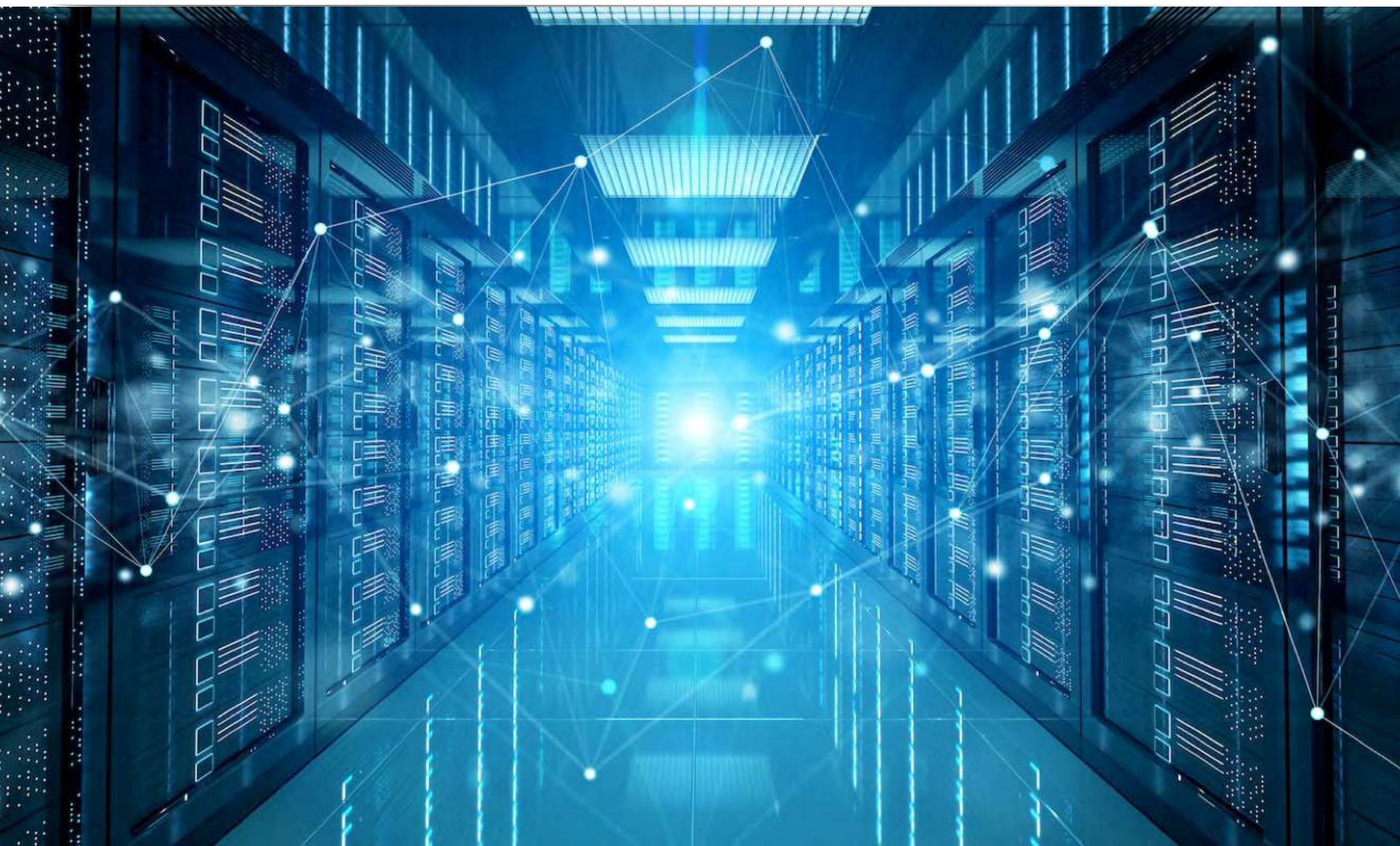
##### LABORATORY SERVICES

- We offer testing services specific to the infrastructure materials within the scope of the 17025 TURKAK Accreditation





# TECHNOLOGY





istanbul



istanbulkart

## BELBİM A.Ş.

### Electronic Money and Payment Services Co.

An affiliate company of Istanbul Metropolitan Municipality, BELBİM A.Ş. is a finance institution with an "Electronic Money Institution" license, and it has been active mostly in the area of R&D since 1987 for Istanbul's public transportation. Our company offers products it developed via domestic software technologies to various sectors with an accurate and secure processing infrastructure.

BELBİM A.Ş. is the founder of the very first electronic fee collection system used in Istanbul's public transportation, and it offers a fast and easy payment option with the "Istanbulcard" it developed.

Being repositioned in 2019 with the "Card for City Life" vision, as something beyond a transportation card, Istanbulcard has turned into an electronic money card that could be used in areas other than transportation; and through collaborations, it became an option for payment from grocery stores to museums, online shopping to cabs, cafe-restaurants to fuel oil stations, and from retail sector to entertainment sector. Offering services as a transportation and city life card, Istanbulcard now offers new developments that excites Istanbulites, such as improving its digital uploading channels via Istanbul Mobile and other mobile banking integrations, and the option to make payments through QR codes. Giving back to the Istanbulites with social responsibility projects, and offering services to Istanbul Metropolitan Municipality through the payment infrastructure it provides, there is no alternative to Istanbulcard as a card for transportation and city life.





## İSBAK A.Ş.

### Istanbul It and Smart City Technologies Inc.

It was founded by Istanbul Metropolitan Municipality (İMM) in 1986 in order to conduct vehicle maintenance services and Istanbul's traffic signalization services. In 1995, it expanded its areas of activity with the foundation of its Research and Development (R&D) department, and initiated professional operations in the area of Smart Transportation Systems, specifically in traffic signalization. İSBAK A.Ş. has transformed its specialization in traffic management systems into innovative and effective solutions with Turkey's first on-site licensed R&D Center in the area of Smart Transportation Systems.

For the purpose of materializing projects that will carry Istanbul into the future, and improve quality of life for the people living in the city in terms of competition, sustainability and habitability, İSBAK A.Ş. has initiated the Smart City Istanbul journey, along with Istanbul Metropolitan Municipality, and it carried through its corporate transformation within the framework of this exact vision.

With 35 years of experience and corporate memory in the area of information technologies, İSBAK A.Ş. is critically important in the materialization of Istanbul's Smart City vision; and as one of Turkey's pioneering technology companies, it undertook a mission to improve quality of life in cities, and specifically in Istanbul. It aims at contributing to the creation of happy cities with sustainable and innovative smart city solutions that have high international competitive power in the area of smart city technologies.

+90 (212) 30190 00

[www.isbak.istanbul](http://www.isbak.istanbul)

[info@isbak.istanbul](mailto:info@isbak.istanbul)



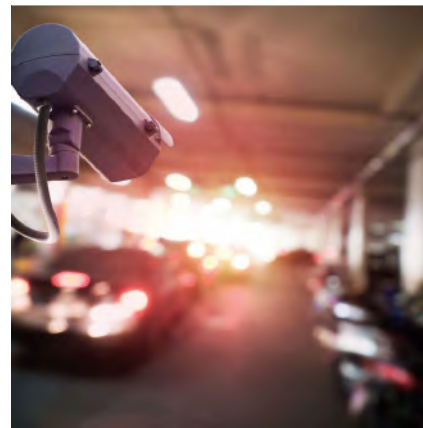


With 35 years of experience and becoming one of the pursued names in the sector, İSBAK A.Ş. offers end-to-end services in the area of smart transportation systems, from production to plan-project survey operations, installation to maintenance repair works, and specifically in traffic engineering.

İSBAK A.Ş. relentlessly work with the aim of sending out its technology to the whole world, with the help of its expert technical staff, and its

technological infrastructure it improves every given day.

İSBAK A.Ş. has been producing new technologies with its own R&D unit in areas of Smart Transportation System, LED, City Lighting Automation Systems, Tunnel Scada Systems, as well as other application areas. These technologies meet not only Istanbul's but other cities' needs as well, in the area of Smart Transportation Systems.



#### SMART TRANSPORTATION SYSTEM

##### TRAFFIC SIGNAL CONTROLLER

It controls the operating statuses of traffic signal signs found in intersections, and prevents an overlap, making them work harmoniously. It reduces density in traffic, as well as vehicle wait times, helping prevent traffic accidents.

#### TRAFFIC SIGNAL CONTROLLER CENTRAL SOFTWARE PROGRAMS

It is now easier to control signalized intersections via the programs with user-friendly interfaces developed by İSBAK's R&D team.

- JSP INTERSECTION SERVICE PROVIDER
- JM INTERSECTION MANAGEMENT PROGRAM
- JAB INTERSECTION BREAKDOWN BROWSER
- JDB INTERSECTION DATA CONTROL BROWSER

#### TRAFFIC SIGNAL LAMPS

Suitable for the image of a modern city, Lightra™ Traffic Signal Indicators are a product of our diligent work, demonstrating our interminable commitment to innovation, reliability, and efficiency. It is designed for optimum performance and quality, and tested under severe weather conditions. While it provides perfect view and brightness, it is quite easy to deliver and install.





#### POWER LED TRAFFIC SIGNAL LAMPS

- Vehicle Signal Lamp
- Ok Signal Lamp
- Pedestrian Signal Lamp
- Flash Signal Lamp

#### LED TRAFFIC SIGNAL LAMPS

- Vehicle Signal Lamp
- Ok Signal Lamp
- Dynamic Pedestrian Signal Lamp
- Dynamic Signal Lamp
- Flash Signal Lamp
- Countdown Signal Lamp
- Bicycle Signal Lamp

- Tram Signal Lamp
- Solar Energy Flash Signal Lamp
- Ok Signal Lamp
- Pedestrian Signal Lamp

#### PEDESTRIAN BUTTONS

In order to ensure pedestrians safely crossing at intersections and to minimally disrupt the flow of traffic, we have been generating solutions with our experience of more than 25 years.

- Pedestrian Button
- Accessible Pedestrian Button



#### ELECTRONIC DETECTION SYSTEMS (EDS)

We are identifying traffic violations via sensors and image processing technology; preventing accidents, therefore reducing loss of life and property.

#### EDS CENTRAL SOFTWARE

13 different violation identification system can be managed from a single center through cloud

technology, and it is capable of working harmoniously with all communication systems.

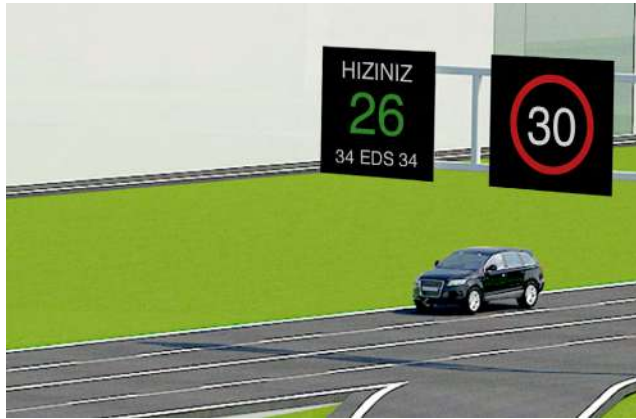
#### AVERAGE SPEED EDS

It calculates average speed information of vehicles passing through starting and end points on arterial roads, and identifies vehicles that pass the speed limit. Its ability to measure speed in a particular corridor separates it from point measurement systems.

#### PARKING VIOLATION EDS

Parking violations leads to unwanted situations on narrow roads, negatively affecting transportation and daily life. Parking EDS identifies vehicles that violate inner city parking rules and therefore negatively influence the flow of traffic, and generates digital records of these violations.





#### MOBILE EDS

These are mobile inspection vehicles equipped with high-tech dynamic cameras and mobile equipment to be used in regions where steady EDS could not be installed. It detects parking, emergency lane and stopping violations that negatively impact the flow of traffic in the city. It is developed to prevent probable accidents and to ensure safety of life and property by conducting regional and intersection security control through dynamic cameras.

#### INSTANT SPEED EDS

Integrated radar warning system

detects vehicles that are above speed limit, and instantly informs and warns drivers on their current speed.

#### PUBLIC TRANSPORTATION SYSTEMS

##### PASSENGER INFORMATION SYSTEMS

These are systems that inform passengers on the line numbers, destination, and the travel-time of vehicles to the stops at public transportation stops. It tops-up public transportation cards at Information Communication Points, and it allows for live voice calls to the authorities to seek for help in

cases of emergency. It has options for stops and types of posts.

#### InformationLED

It is a system that provides real-time trip information to passengers at point of departure for transportation vehicles, such as metro, tram and buses. It informs passengers waiting at the stops on trip changes or trip cancellation. In case of need, it can transmit state of emergency messages from the headquarter.

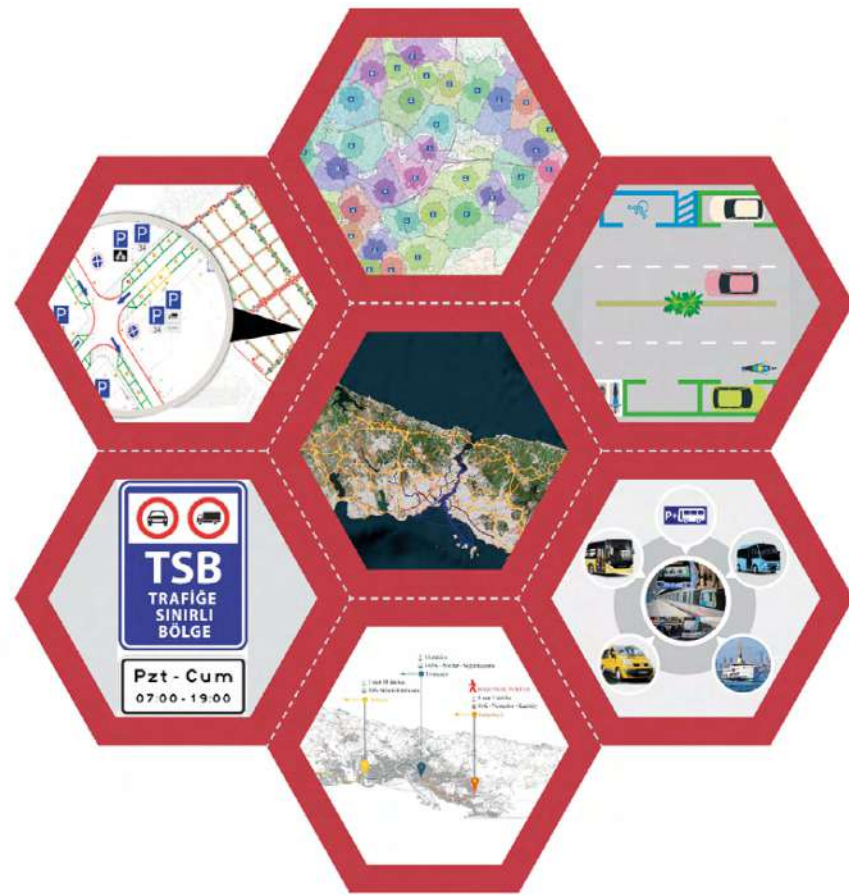


#### IN-VEHICLE CAMERA SYSTEMS

These are systems that improve service quality of public transportation, as well as passenger safety by monitoring all movements of public transportation vehicles, such as the busses, minibuses, cabs, and other shared rides. By placing recording cameras inside the cabins of public transportation vehicles, events can be monitored and recorded. Furthermore, through satellite technology, it allows for the tracking and inspection of vehicle locations, speed and route information.







## PLANNING AND PROJECT DESIGN

### TRANSPORTATION PLANNING

Within the scope of Transportation Planning efforts, medium and long term solutions are generated for current or foreseen transportation problems in the cities. In that regard;

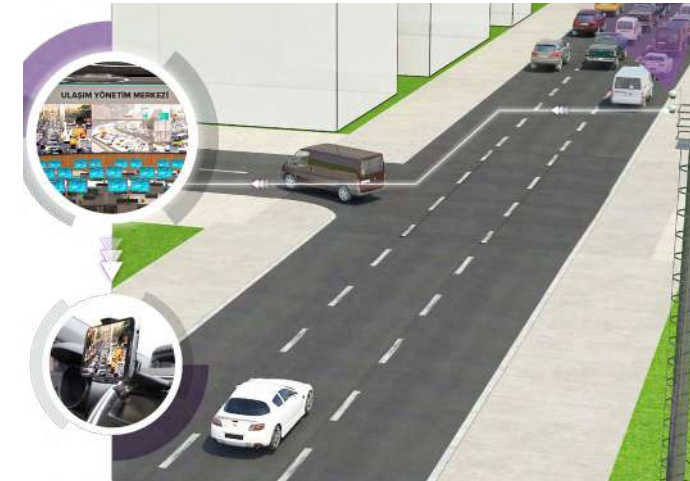
- Transportation Master Plans
- Public Transportation Planning

- Parking Lot Planning
- Traffic Claim Management are currently being carried out.

### TRAFFIC ENGINEERING

Traffic Engineering operations include short and medium term solutions to current or foreseen transportation problems in the cities. In that regard;

- Traffic surveys
- Traffic analysis and simulation operations
- Geometric regulation and circulation operations
- Signalization projects and analysis
- Corridor analysis
- Traffic impact analysis
- Bike lane projects are currently being carried out.



## INTEGRATED SOLUTIONS

### MANAGEMENT CENTERS

These are management centers that combine separate management platforms and smart city services, classify them according to level of significance, and therefore give fast and easy access to critical data.

### CAMERA SYSTEMS

These are systems where images retrieved from cameras are viewed, recorded and processed for need-based services like security, touristic

activities, mobile applications and trip planning.

- Sturdy design appropriate for outdoor conditions
- Integrable and easily manageable software
- Active data with video analytics (object counting, restricted zone, etc.)
- Multi-broadcast support

### FLEET MANAGEMENT SYSTEMS

With out fleet management systems, we are ensuring safety and manageability in transportation through technological solutions.

## TRAFFIC ASSESSMENT AND INFORMATION SYSTEMS

These are systems used to inform drivers on the density of traffic, weather conditions and road condition, to direct them to alternative routes based on the information provided, and to control the flow of traffic. Using LED screens, traffic information systems are capable of graphic-based writings, shapes and images, and they can be managed via the map-based central software in a scenario-based fashion.



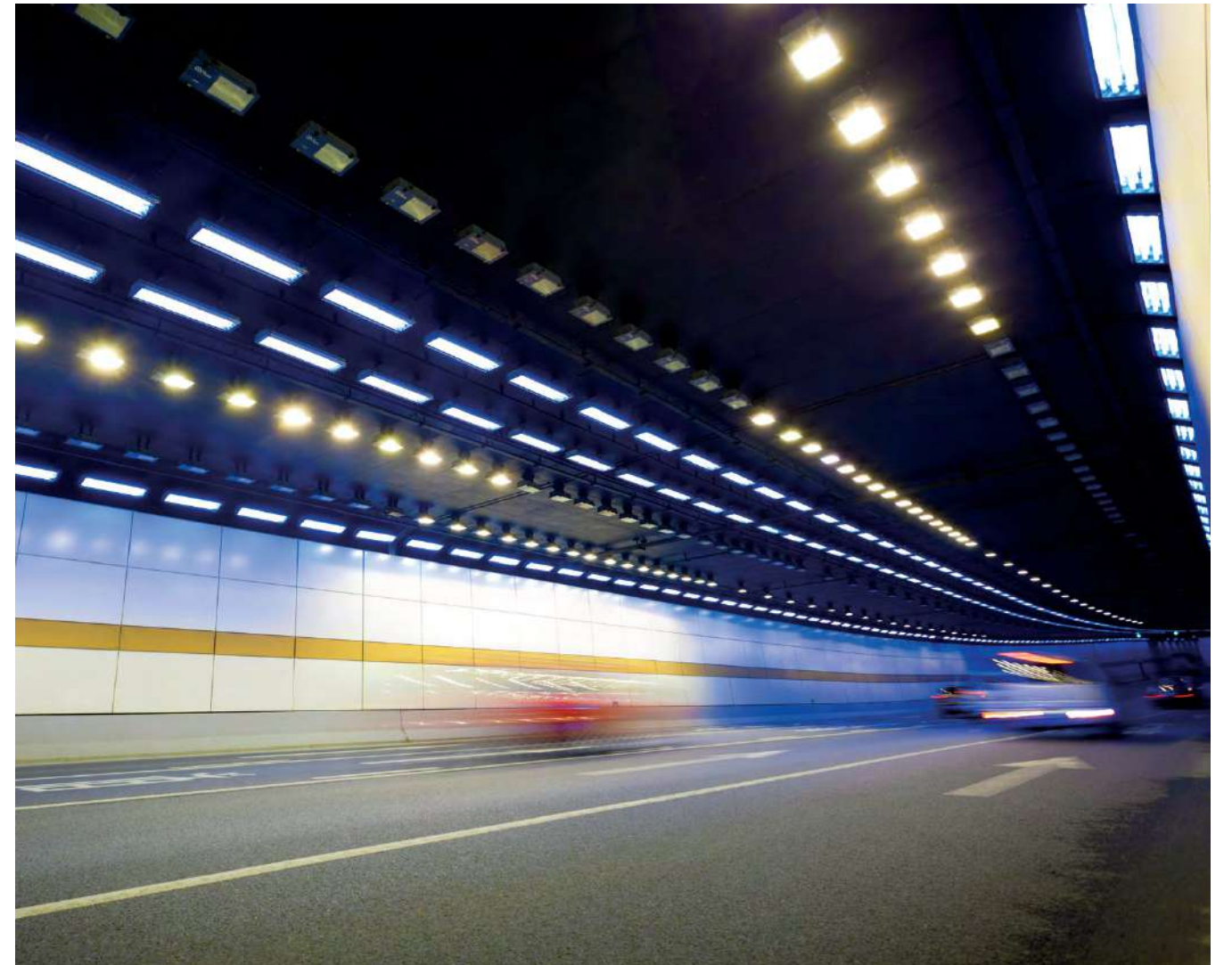


#### VEHICLE PC

IETT fleet commander ensures the tracking of the busses, trip times for Drivers, and stop information indicated on passenger screens, as well as the announcement of Stops via GPS and GPRS signals.

#### BLACK BOX

Created for companies with vehicle fleet, black box is a new generation resource management and economy system vehicle control and registering unit based on safe driving and fuel efficiency.





# COMMUNICATION







## İSTTELKOM A.Ş.

### Istanbul Electronic Communication and Infrastructure Co.

İSTTELKOM A.Ş. was founded as an affiliate company of Istanbul Metropolitan Municipality (İMM) in order to address the needs in information technology and electronic communication areas.

As a public enterprise, İSTTELKOM A.Ş. has been generating the communication infrastructure, which is the backbone of smart cities, in order to leave a more livable and sustainable cities to the future generations.

Having a significant position in the sector, İSTTELKOM A.Ş. aims at becoming the most suitable address to all of its partners in terms of carrying them into the future, by means of consistently creating Information Technologies (IT) solutions, and new values in the area of digital transformation.

#### OUR AREAS OF SERVICES AND SOLUTIONS

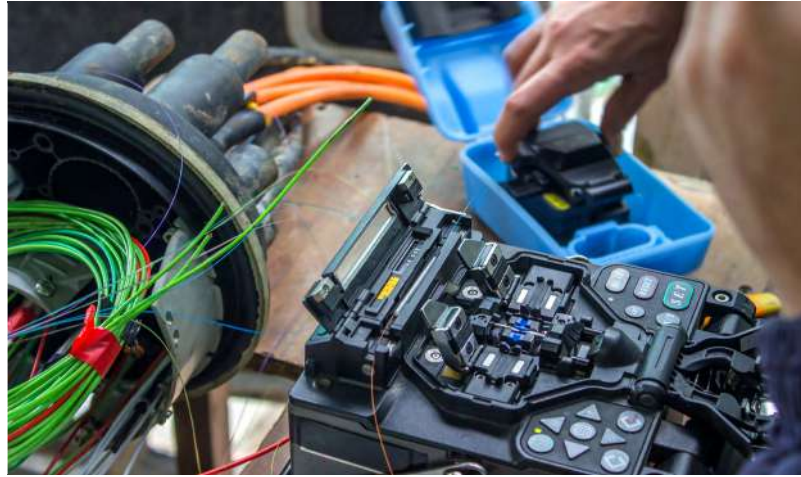
- Digital Transformation Services
- Informatics Services
- IT Security Solutions
- Data Center Solutions
- (Fiber) Communication Infrastructure Management Service
- Internet Service Provider (ISP) Services
- Radio Services
- Wireless Network Services
- Internet of Things (IoT) Services
- Smart City Furniture and Communication Services

+90 (212) 40138 50

[www.isttelkom.istanbul](http://www.isttelkom.istanbul)

[info@isttelkom.istanbul](mailto:info@isttelkom.istanbul)





## DATA CENTER SOLUTIONS

As İSTTELKOM, we are offering uninterrupted, affordable, efficient, reliable data center services with high standards to the units of Istanbul Metropolitan Municipality, and its subsidiaries, and other public institutions. A large spectrum of various data center services are provided to the companies at the İBB Data Center, specifically in security, data storage, hosting, and cloud.

Thanks to our Data Center services, you can reduce your risks, save money, and you can increase your

efficiency and competitiveness with our cloud services.

Having acquired the Tier III Design and Facility certificate, İBB Data Center will add strength to Istanbul's digital transformation; and we are by your side with our strong technology, superior network infrastructure, and our corporate data center solutions based on international standards.

## (FIBER) COMMUNICATION INFRASTRUCTURE MANAGEMENT SERVICE

İSTTELKOM has been successfully

providing different engineering and consultancy services to its clients, from planning stage of telecommunication infrastructure services for smart cities, to their management processes.

İSTTELKOM provides broadband (fiber) connection system to public and private institutions with its communication infrastructure services.

With the qualified engineering and manpower it has, İSTTELKOM is capable of offering periodic infrastructure maintenance services.



İSTTELKOM plans for all of its partners the most affordable innovative technological solutions and services required by modern smart urbanism, and it aims for becoming a preferred communication infrastructure provider in the electronic communication market.

## WIRELESS NETWORK SERVICES

Through our Wireless Network Services, we are offering services in designing WiFi network structures for companies based on their needs, making connections between remote centers, and installation

of security analysis and systems.

You can leave all areas that require expertise, such as all of WiFi infrastructure hardware installation, operation, software and maintenance to İSTTELKOM, and you can have turn-key wireless network solutions.

## ROBOTIC PROCESS AUTOMATION SOLUTIONS

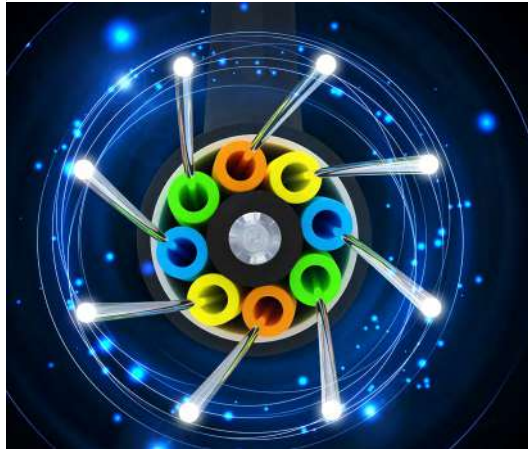
Our Robotic Process Automation solutions will automatize your operational processes, which are high density, rule-based, recursive, fore-

seeable with high probability human error, from operation to sales, and information technologies and human resources.

We teach software robots the interaction movements of your employees through an interface, and help you save time and operational costs.







## CYBER SECURITY SERVICES

It is strictly important that the complex Information Technologies infrastructures that institutions have are regularly inspected and their readiness against current threats is identified by going through attack simulations.

In that regard as İSTTELKOM, we provide end-to-end cyber security services to organizations and institutions towards ensuring security of the systems of information technologies. The process starts with the analysis of corporate entities, and it aims at identifying the possible threats,

reporting findings following penetration tests, and identifying actions to take in order to optimally minimize the risk.

In this sense, all systems, especially the intranet, extranet, web and the mobile application are tested, and the company is most correctly directed towards the required security investments according to the company's cyber security risk map.

## DIGITAL ARCHIVING SYSTEM SOLUTIONS

Digital Archiving System is an archive management software

that you can operate by integrating all physical and digital archives needed by your institution with other automations used. Thanks to this system that allows for multithreading, all data is easily and instantly accessible, updatable and shared in the electronic environment from one source.

One of the basic goals here is to minimize the effort, time and cost of printing, copying, filing and archiving documents, and to better transfer all types of documents to the future generations.



## DIGITAL PUBLISHING SOLUTIONS

Our Digital Publishing services allow you to manage all of your screen and publication flows from one center.

With our professional teams, we are offering end-to-end "digital signage" solutions to companies through our installation and infrastructure maintenance support, software, content management and reporting services.  
Digital Signage System

allows you to communicate your advertisements and announcements to your target markets at a desired time, place and quality.

Thanks to systems that provide services over the cloud to customers who wish to do so, controlling your contents will be easy.

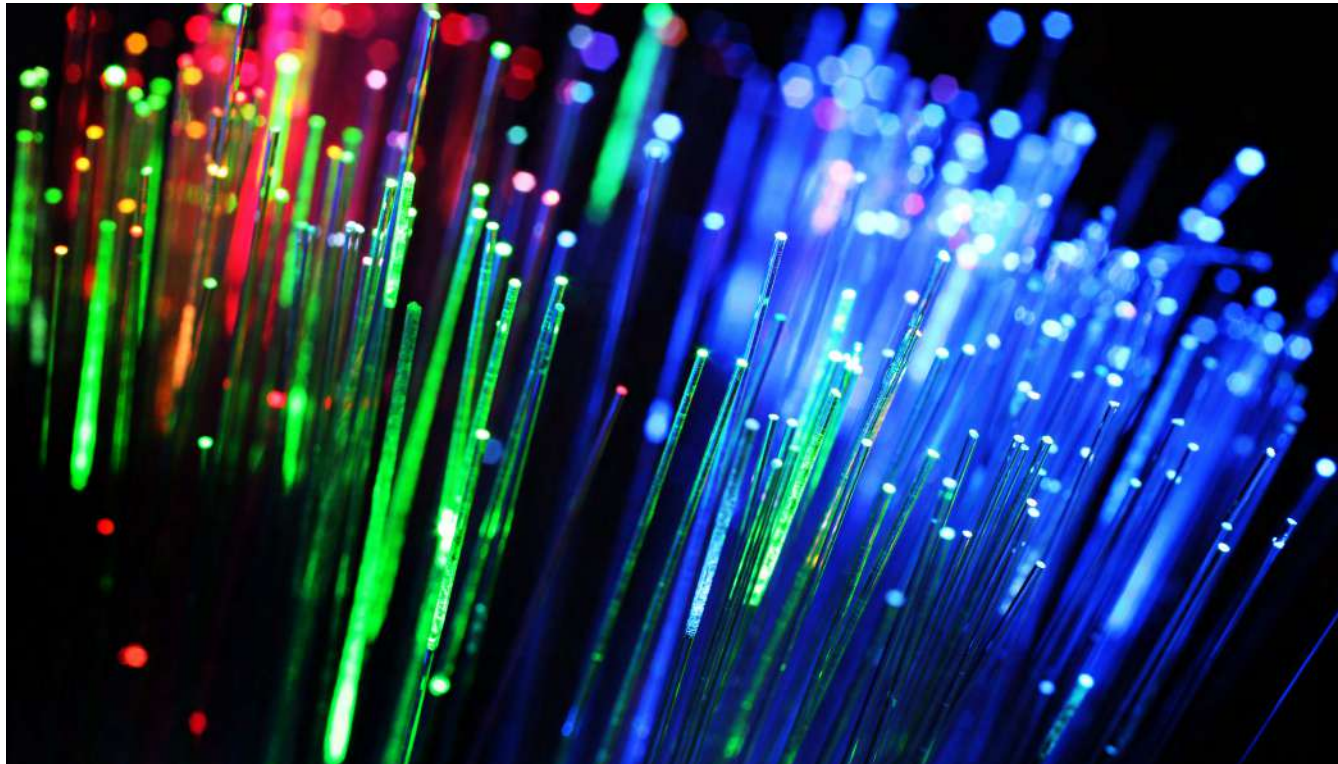
## SD-WAN SERVICES

A software-based network architecture that allows for the centralized management of wide

area networks, SD-WAN is the ideal, most affordable network solution to address your scalability, flexibility, manageability and visibility needs.

You must experience our easily manageable SD-WAN solutions with guaranteed high performance, right away, as they are an integral part of digital transformation.



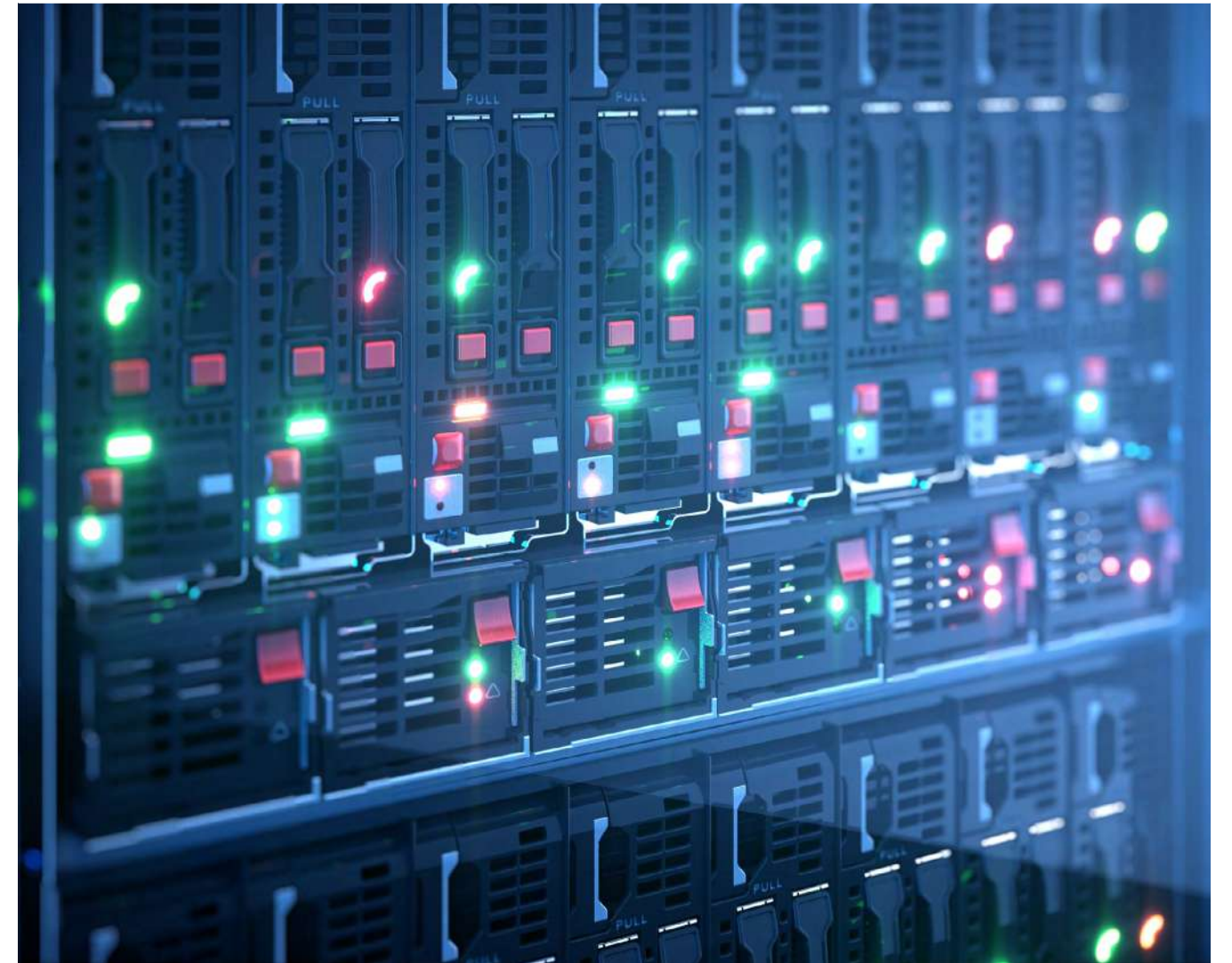


#### INTERNET OF THINGS (IoT) SERVICES

As İSTTELKOM, we are improving your operational efficiency through our internet of things (IoT) services, and offer you solutions through which you will expand your business, and enhance your processes. Thanks

to Internet of Things (IoT) communication systems, smart electricity, water and natural gas meters are read and managed remotely. The platform offers various solutions for instant tracking of meter usages, transferring and verification of data to the central system as well as

their storage, and their submission to parties in the desired format. Through our LoRaWan solutions, we are providing project designs of communication network needs, infrastructure design, system management, installation and integration, as well as maintenance and support services.





# SERVICE







## KÜLTÜR A.Ş. Istanbul Culture Co.

Kültür A.Ş. is an affiliate of IMM that operates in the areas of art, publishing, bookstore and cafe management, museum and cultural sites management, and the management of outdoor advertisement sites.

Kültür A.Ş. brings together Istanbulites with various different cultural and art activities all over the city, from concerts to theatre plays, exhibitions to film screenings, activities for children to interviews and trainings; and it conducts publishing operations with the "Culture Co. Publishing". The advisory committee of the Culture Co. Yayınları include historian İlber Ortaylı, PhD; clinical psychologist Ipek Gokozan; poet and author Baki Asiltürk, PhD; historian and author Sinan Meydan; author Alper Ceker; and attorney Ahmet Ece; while it has recently adopted a stronger approach scientifically and editorially, introducing various new books to the bibliophiles.

Through its "Istanbul Bookstores" Kültür A.Ş. Publishing brings together book lovers publications from other publishing houses, aside from the Kültür A.Ş. books - and these bookstore/cafes are managing some of Istanbul's most scenic cafes. Istanbul Bookstore branches are also hosting regular and various cultural art activities, concerts, author meetings and interviews, operating as a small-size cultural center. The online shopping platform of Istanbul Bookstore, [www.istanbulkitapcisi.com](http://www.istanbulkitapcisi.com), shares around 400,000 books from more than 6 thousand publishing houses with book lovers all across Turkey.

The Basilica Cistern, Serefiye Cistern, Miniaturk, Panorama 1453 History Museum, and Topkapı World of Turks Cultural Neighborhood are all operated by Kültür A.Ş. Aside from these museums, Kültür A.Ş. are also managing 14 other cultural centers of the Istanbul Metropolitan Municipality, particularly Cemal Resit Rey Concert Hall.

Furthermore, Kultur A.S. operates outdoor advertisement media throughout Istanbul.

+90 (212) 467 07 00

[www.kultur.istanbul](http://www.kultur.istanbul)

[iletisim@kultur.istanbul](mailto:iletisim@kultur.istanbul)





## İSYÖN A.Ş.

### Istanbul Seafood Wholesale Market Management Co.

İSYÖN-İstanbul Yönetim Yenileme A.Ş. was founded in 1993 by the name OZİ- DAS Construction, Restoration, Mining, Industry and Trade Co. as an affiliate to the Special Provincial Administration; and since 2014 it maintains its operations as an affiliate company of the Istanbul Metropolitan Municipality.

Having successes in various projects in the areas of Construction, Restoration and Mining, İSYÖN A.Ş. moved on to conquer the management area in September 1, 2015, and started operating Garpınar Water Products Bazaar, which is the largest seafood wholesale facility in Europe.

İSYÖN A.Ş. aims at making the Garpınar Seafood Wholesale Market an attraction center catering to the expectations and needs of people of Istanbul with its 400.000,000 square meters facility with 400 ton/day product capacity. Being an affiliate of the Istanbul Metropolitan Municipality, İSYÖN A.Ş. fulfills its public responsibility with its 23 years of experience, technological equipment, and people-oriented management and service mentality, while it will continue to improve its competitive power in the sector with an attitude based on productivity and quality.

+90 (212) 867 64 00

[www.isyon.istanbul](http://www.isyon.istanbul)

[bilgi@isyon.istanbul](mailto:bilgi@isyon.istanbul)





## İSTGÜVEN A.Ş.

Istanbul Security Co.

As İSTGÜVEN A.Ş. we have been contributing to the security of the people of Istanbul in 30 active projects, with our close to 10 thousand personnel.



Emergency buttons designed by İSTGÜVEN A.Ş. are now being used at the Kemerburgaz City Forest. The people of Istanbul are able to make voice and video calls to our security teams using the emergency buttons whenever they need to.

+90 (212) 380 0162

[www.istguven.istanbul](http://www.istguven.istanbul)

[info@istguven.istanbul](mailto:info@istguven.istanbul)





## SPOR İSTANBUL A.Ş.

Sports Istanbul Co.

İstanbul Spor Etkinlikleri ve İşletmeciliği Ticaret A.Ş. was founded in 1989 as an affiliate to the Istanbul Metropolitan Municipality. It prioritized strengthening the physical and mental health of the people of Istanbul, developing their attributes through benefiting from sports facilities and actively participating in sports activities. Its primary activities are managing Istanbul Metropolitan Municipality's sports facilities, organizing scientific, technical, educational, athletic, tropistic, cultural races, festivals, exhibitions, trips, camps, conferences, seminars, and courses that are national and international events on all sports branches, conducting research and educational studies.

Since its foundation, it has gained significant achievements and experiences in sports facility management, organizing and actualizing national and international sports organizations. With an aim to improve the quality of social life, Spor İstanbul A.Ş. offers various opportunities to people for regularly and consciously exercising at all of its modern sports facilities. Furthermore, it has been taking significant steps in establishing a modern infrastructure to Turkish sports, recruiting new athletes, and offering opportunities to disabled athletes.

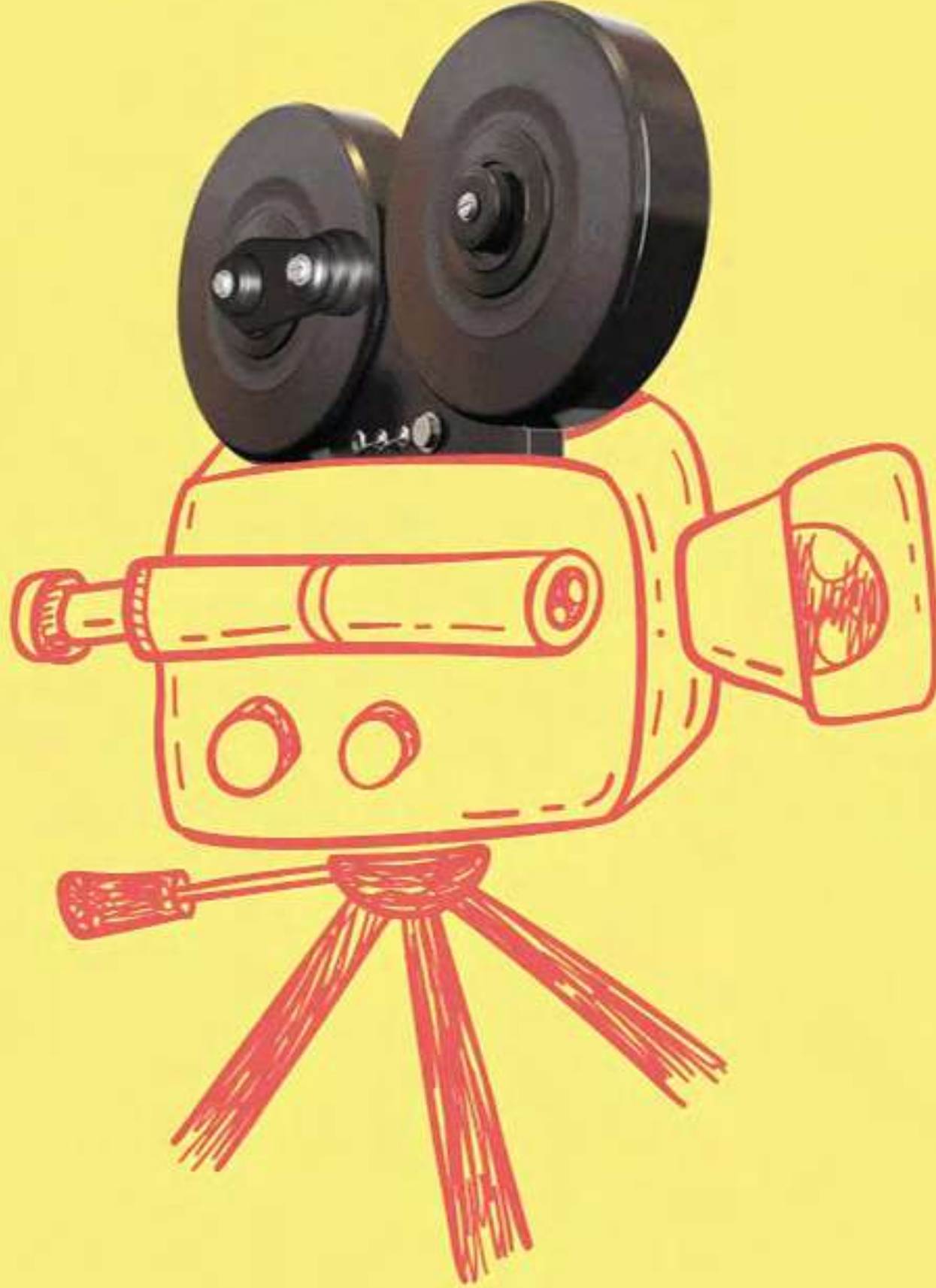
Spor İstanbul A.Ş. offers sports services year round to the people of Istanbul in its 52 sports facilities, and annually organizes dozens of national and international sports activities, specifically the Istanbul Marathon. In order to develop these services in a more quantifiable and scientific fashion, Spor İstanbul A.Ş. puts emphasis on business and system development works, and in light of these outputs, adds new sports services to Istanbul, and new functions to the company.

+90 (212) 453 30 00

[www.spor.istanbul](http://www.spor.istanbul)

[info@spor.istanbul](mailto:info@spor.istanbul)





## MEDYA A.Ş. Media Co.

An affiliate to the Istanbul Metropolitan Municipality, Medya A.Ş. was founded in 2011, and it became one of the pioneers of digital publishing with the indoors and outdoors advertisement promotion media that are now found all over the city. As it feels Istanbul's pulse, so to speak, with its own publications, it also provides daily news, information, and informatics services on the city.

Through the digital screens placed at bus stops, fixed racquets, megaliths, and various other places in the city, Medya A.Ş. continuously communicates to the people of Istanbul, and reaches out to millions of citizens on the roads, squares and public transportation vehicles.

The Istanbul Agency Newspaper as well as its news channel publishes and broadcasts various content from culture to sports, economy to environment, and education to health in many different formats; and through Traffic Radio it shares instant road and traffic conditions with the people of Istanbul.

Owning the .istanbul and .ist area extension, Medya A.Ş. also offers services to the Istanbulites as a company of digital media, production and media planning.

+90 (212) 375 32 00

[www.medya.istanbul](http://www.medya.istanbul)

[iletisim@medya.istanbul](mailto:iletisim@medya.istanbul)





## BOĞAZIÇI YÖNETİM A.Ş.

Boğaziçi Management Consultancy Co.

Boğaziçi Yönetim A.Ş. was founded in 1997 in order to provide integrated facility management services in housing estates as Istanbul Metropolitan Municipality's public affiliate.

It has contributed in the improvement of life in the city through services that added value to the management of common life and areas of usage in approximately 650 facilities and 220,000 independent departments in 33 cities of Turkey.

Today, around 6,500 personnel provides services in common living areas, symbolic facilities and housing estates of Istanbul, one of world's special cities with unique features. Our company aims at making places it took on to organize their managements a peaceful nest for the people in the region; and it currently provides management consultancy services to private housing estates, aside from those built by 'KİPTAŞ (Istanbul Residence Development Plan Industry and Trade Co.)' in Istanbul.

Boğaziçi Yönetim A.Ş. also handles the management services at Grand Istanbul Bus Terminal and Kemerburgaz City Forest, and offers cleaning, maintenance, and repair services in common areas used by millions of people daily all around Istanbul.

In order to ensure the preservation of Cultural Heritages in a sustainable regularity, Boğaziçi Yönetim A.Ş. makes sure that the general cleaning and simple maintenance and repairs of Cultural Heritage Estates like Mosques with Historical and Touristic Significance, Historic Shrines, Burial Areas, Fountains, Monuments and Statutes are performed, and that the cleaning services provided to the institutions and affiliates of the IMM are conducted in accordance with the regulations.

+90 (212) 663 0303

[www.bogaziciyonetim.istanbul](http://www.bogaziciyonetim.istanbul)

[info@bogaziciyonetim.istanbul](mailto:info@bogaziciyonetim.istanbul)





## İSPER A.Ş. Istanbul Personnel Co.

With a motto of 'Accurate Solutions for Employment and Manpower Management', İSPER A.Ş. provides qualified manpower support with more than 15 thousand employees serving in field jobs to the Istanbul Metropolitan Municipality, its affiliates and subsidiaries. As a company with the largest amount of human resources among all other IMM affiliates it takes on responsibilities in all areas such as job placement process support, hiring procedures and orientation program management for all these employees; as well as personnel, tally, and payroll affairs, management of leave of absence, disciplinary processes and dismissal process management.

İSPER A.Ş. brings together those who are looking for a job with employers through the Regional Employment Office; and it aims at generating permanent solutions by adding 'providing jobs' step to employment through coordinating its İSMEKs.

İSPER A.Ş. provides Human Resources Consultancy Services through competent professionals it employs as well as outsourced consultants, and this way presses forward to becoming the human resources company of the Istanbul Metropolitan Municipality.

İSPER A.Ş. recently incorporated the Directorate of Education and Development, and thus took on very important responsibilities in the preparation and implementation of education and development activities of the IMM, its affiliates and subsidiaries, as well as in the areas of Leadership Programs, and Corporate and Vocational Training.

+90 (212) 444 77 33

[www.isper.istanbul](http://www.isper.istanbul)

[info@isper.istanbul](mailto:info@isper.istanbul)









## HALK EKMEK A.Ş.

### Istanbul Public Bread Co.

Halk Ekmek A.Ş. was founded to produce, distribute and to establish the units necessary for distribution in order to address the people of Istanbul's needs for regular, affordable, healthy and good quality bread, as well as all types of bakery products.

In this regard, Halk Ekmek A.Ş. produces particularly normal bread, and other bakery products; and since the very beginning have been offering affordable and healthy bread, which is the most staple food, to the people of Istanbul, and plays a regulatory role in determining prices.

+90 (212) 476 00 90

[www.ihe.istanbul](http://www.ihe.istanbul)

[ihe@ihe.istanbul](mailto:ihe@ihe.istanbul)





## HAMİDİYE A.Ş. Istanbul Spring Water Co.

Founded in 1902 to provide quality drinking water to Istanbul, Hamidiye A.Ş. has always been distributing the tasty, healthy and safe natural spring waters retrieved from the springs inside Istanbul's natural forests to the people of Istanbul, as well as to a great many regions in Turkey, and to several countries in the World. Hamidiye A.Ş. operates as an affiliate of the Istanbul Metropolitan Municipality.

Hamidiye Water is being produced under complete hygienic conditions, untouched by human hands and without changing its natural and mineral characteristics, under the guidance of specialized and experienced experts at its modern filling and packaging facilities equipped with high-end technologies, and safely presented to the consumers.

According to the 2020 IPSOS household consumption panel research report, 'Hamidiye Water' has been the most consumed brand as the market leader in Istanbul in dispenser size waters and plastic bottles consumed at home.

Hamidiye A.Ş. has been collaborating with international airlines, and meets the consumers at wholesale, retail, grocery stores, hotels and restaurants.

+90 (212) 360 17 45 / +90 (212) 360 13 13

[www.hamidiye.istanbul](http://www.hamidiye.istanbul)

[bilgi@hamidiye.istanbul](mailto:bilgi@hamidiye.istanbul)





Hamidiye continues to be the most sought for and preferred brand in many countries; from Far East to Europe, Africa to Australia and the Middle East, it continues to deliver its quality and taste to the consumers in 32 countries.

The products that Hamidiye exports are as follows:

- 0,20 L Plastic Bottle
- 0,33 L Plastic Bottle
- 0,50 L Plastic Bottle
- 1 L Plastic Bottle
- 1,5 L Plastic Bottle

- 5 L Plastic Bottle
- 10 L Plastic Bottle
- 0,33 L Glass Bottle Water
- 0,75 L Glass Bottle Water
- 20 L Box Water
- 110 ml Cup
- 150 ml Cup
- 180 ml Cup







## BELTUR A.Ş.

### Istanbul Tourism and Health Investments Management Co.

Beltur A.Ş. is an Istanbul Metropolitan Municipality company, and has been operating since 01.01.1997 under the title of 'BELTUR Grand Istanbul Education Tourism and Health Investments Management and Trade A.Ş.'.

Beltur A.Ş. has acquired the TURSAB A Group Travel Agency Management Certificate, The Ministry of Culture and Tourism Management Certificate, and the ISO 9001:2015, ISO 22000:2018 and ISO 45001:2018 certificates in order to perform tourism and gastronomy management at national and international standards.

+90 (216) 413 92 53

[www.beltur.istanbul](http://www.beltur.istanbul)

[info@beltur.istanbul](mailto:info@beltur.istanbul)





## GÜVEN SU A.Ş. Guven Su Water Co.

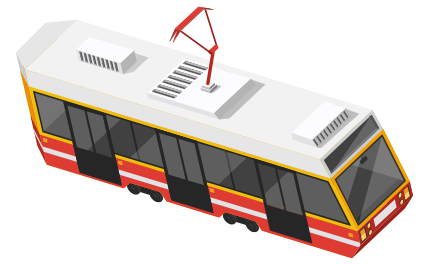
Güven Su (formerly Guvenpinar) is the high quality, natural spring water coming out from the Belgrad forests since 1990.

Güven Su (Guven Su Water Co.) had increased and continued its production and sales until 2016. The company was bought by Istanbul Spring Water Co. in 2016, and again in the same year, some of its shares were transferred to Istanbul Energy Industry and Commerce Co., Istanbul Bus Co., Istanbul Public Bread Co., and to Istanbul Culture Co., ending up in the foundation of today's GÜVEN SU Water Co..

In 2019, investments on renewal and modernization were made at the Güven Su A.Ş. facilities. In that framework, water collection, storage and filtering systems were completely renewed with new technologies, and the reformation of the buildings, facilities as well as the environmental plans were majorly completed in this period.



# TRANSPORTATION







## İSTANBUL ULAŞIM A.Ş.

### Istanbul Transportation Co.

Being one of the major solution partners of the Istanbul Metropolitan Municipality and the İETT General Directorate (Istanbul Electricity, Tramway and Tunnel) İstanbul Ulaşım A.Ş. offers the people of Istanbul a reliable, punctual and quality transportation service. It has included car rental services in its structure, aspiring to make resources used effectively, affordably, and efficiently for the Istanbul Metropolitan Municipality, and its affiliated institutions and organizations.

Aside from these services, İstanbul Ulaşım A.Ş. also has the authority to provide services in the areas below.

All types of air and land (but not the rail systems) public transportation services in order to meet the public transit and transportation needs

Purchasing all types of air and land transportation vehicles, renting them out with or without drivers

Call center for cab services

Bus services for touristic city tours

Personnel shuttles

Ports for sea buses and bus services from airports to main connection points.

+90 (212) 240 34 00

[www.ulasim.istanbul](http://www.ulasim.istanbul)





## ŞEHİR HATLARI A.Ş. Istanbul Ferry Lines Co.

As an affiliate company of Istanbul Metropolitan Municipality, Şehir Hatları A.Ş. has inherited the legendary past of Şirket-i Hayriye that was founded in 1851; and as it maintains sea transportation, it is making history as well in today's world as a leading and innovative organization in Turkey.

Şehir Hatları A.Ş. carries out a daily approximate of 636 trips with 28 ferries from 50 ports; carrying around 40 million passengers a year.

Specifically the trips on the magical Bosphorus, the Golden Horn, and the Prince's Islands during which the people of Istanbul enjoy the gulls, and images of historic and cultural monuments surrounding them, leave an incredibly pleasant impression on the lives of passengers. As a symbol of Istanbul, Şehir Hatları A.Ş. ferries continue their historic journey. Having the subject of songs and movies, these journeys are orally or in writing passed on from one generation to the next.

Since the 1920s, the Short and Long Bosphorus Tours have been a popular attraction not only for the Istanbulites but also for domestic and foreign tourists visiting Istanbul. These tours introduce an opportunity to take a panoramic look at Istanbul's beauties and magnificence from the sea, and offer passengers a one-of-a-kind experience along the coast of the Bosphorus accompanied by the sea and the gulls.

While the Şehir Hatları A.Ş. ferries have been and are still providing the public with all the beauties and opportunities that the sea has to offer, the company follows the technological developments and innovations in its sector, getting ready to provide the future generations with the most pleasant journeys of all times.

+90 (212) 313 80 00

[www.sehirhatlari.istanbul](http://www.sehirhatlari.istanbul)

[info@sehirhatlari.istanbul](mailto:info@sehirhatlari.istanbul)





#### SEA CABS

They are being built at the Golden Horn Shipyard with the aim of increasing the volume of sea transport in Istanbul public transportation.

These boats are designed to offer services from any seashore where passengers can safely board.

Built as a single body, these boats can go up to 25 knot speed with 2 engines of 150kW at an 85% MCR; they ensure low fuel consumption, and are envisioned and developed

as an environment-friendly model. Thanks to the mobile ramp system, these boats aim for unobstructed transportation with a capacity for 10 passengers.

#### THE GOLDEN HORN SHIPYARD

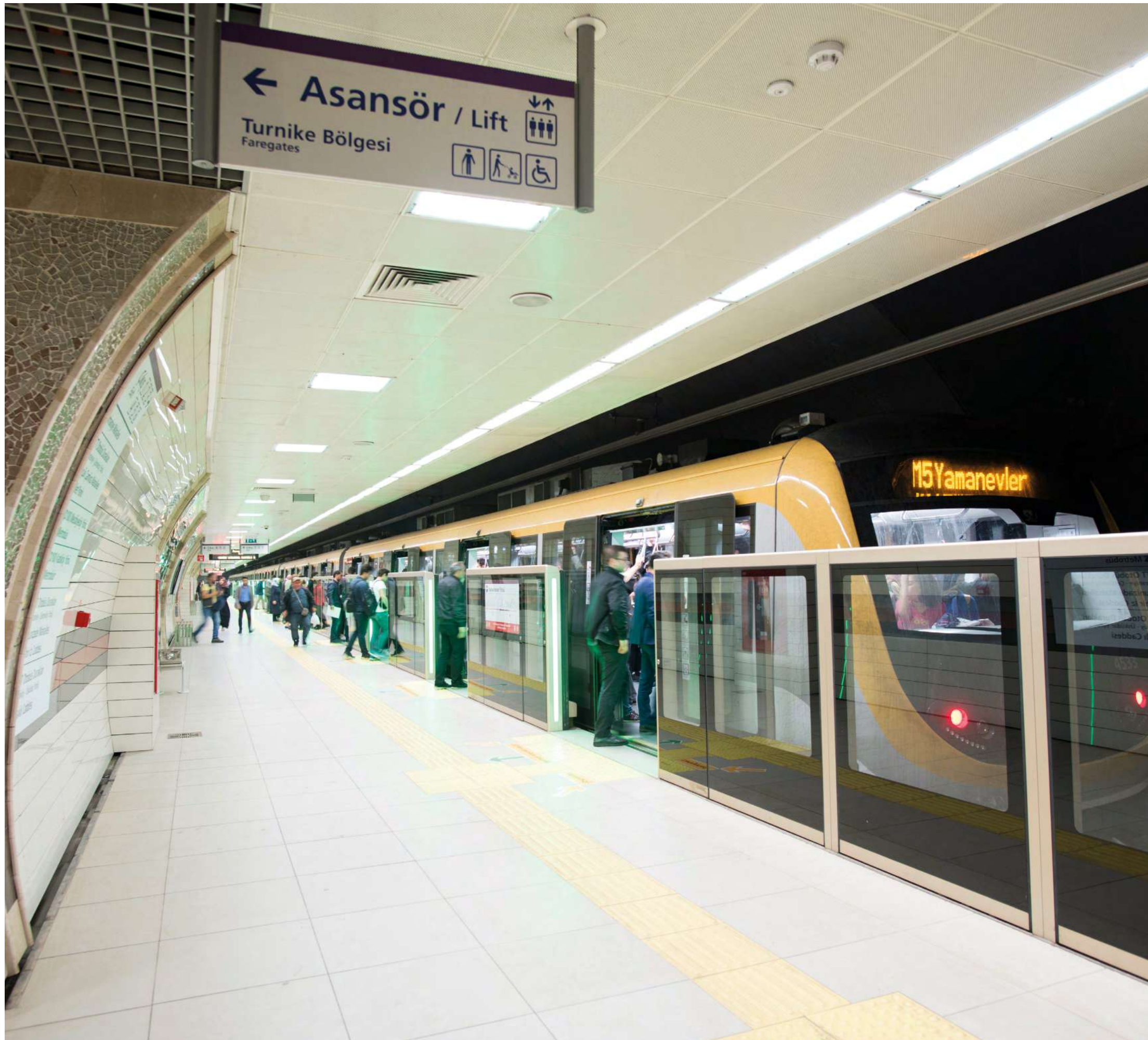
World's oldest active shipyard, the Golden Horn Shipyard continues to build with its 565 years of knowledge and experience. Historic Golden Horn Shipyard fulfills all shipyard qualifications with 3 historic stone pools built in the 1700s and 1800s, 2 slipways, and manufacturing workshops.

The professional teams working at the Golden Horn Shipyard take care of all maintenance-repair works for the City Lines fleet, maintenance and repair of private and public ships, docking, breasting, painting, survey, special survey processes, as well as the building of new ships.

Dimensions of the Dry Pools:  
Dry Pool 1: 109 meters long; 22.20 meters wide; 10.5 meters deep  
Dry Pool 2: 81.5 meters long; 17.80 meters wide; 9.86 meters deep  
Dry Pool 3: 151.05 meters long; 19 meters wide; 9 meters deep.







## METRO İSTANBUL A.Ş.

### Metro İstanbul Co.

Metro İstanbul A.Ş. was founded in 1988 by the Istanbul Metropolitan Municipality in order to manage the rail systems in the city. Maintaining its activities as an affiliate company to the Istanbul Metropolitan Municipality, our company operates the current metro, tram, funicular, and sky tram lines in Istanbul.

Throughout Istanbul, the length of the city rail system management is 262.15 kilometers. Metro İstanbul offers daily services to over 2 million people with 16 lines that adds up to 183.15 kilometers within the total system; and it is one of the cited brands around the world with its quality of service. The T1 Kabatas-Bagcilar Tram Line operated by the Metro İstanbul A.Ş. has been selected as the best application in the world by the International Association of Public Transport in terms of addressing the high passenger demand.

Consistently enhancing its service network with the accelerated rail system investments and the activation of new lines, Metro İstanbul A.Ş. improves its quality of services with a passenger-oriented perspective. Metro İstanbul A.Ş. offers fast and effective world-class transportation services, consistently advances its transport technologies, and perpetually invest in the R&D and human resources; and it continues its efforts in bringing Istanbul to the future.

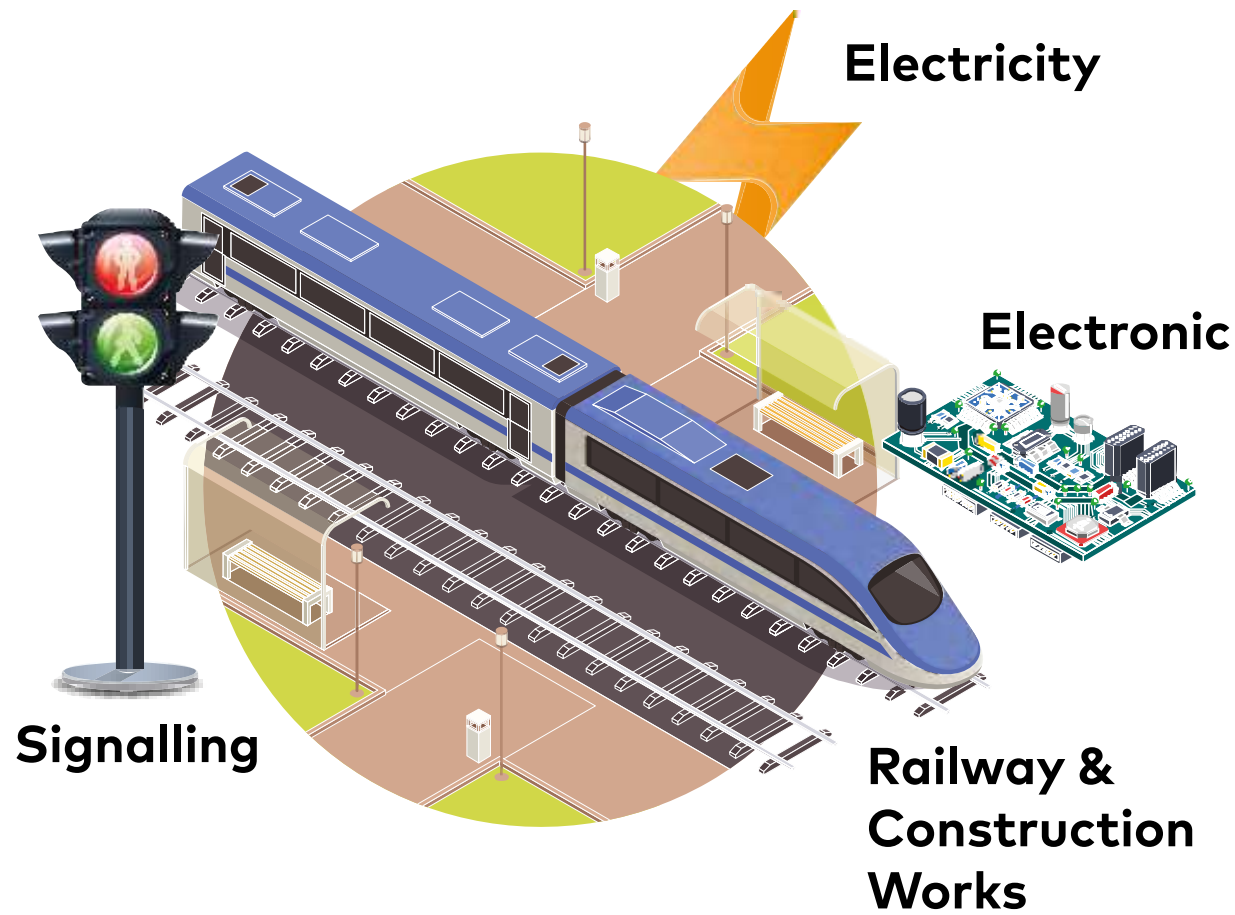
Aside from rail system management, Metro İstanbul A.Ş. also handles the maintenance and repairs of the rail system vehicles, stations, permanent facilities and line infrastructures it manages, as well as the electrical systems. In addition to the management and maintenance and repair works, our company also offers engineering and consultancy services for Istanbul's future metro projects, and for the public transportation projects at home and abroad.

+90 850 252 88 00

[www.metro.istanbul](http://www.metro.istanbul)

[info@metro.istanbul](mailto:info@metro.istanbul)





With a network length of 181.05 kilometers, 15 separate lines, 186 stations and a fleet of 949 vehicles, with more than 33 years of rail system management and maintenance experience, and our trained specialized staff we provide;

#### RAIL SYSTEM TRAINING

We provide electrical, electronics, signalization, electromagnetic systems, and railroads and construction works trainings in the area of rail system.

#### MAINTENANCE SERVICES

We provide uninterrupted and

comfortable management service by offering protective and preventive station and facility maintenance services.

#### VEHICLE MAINTENANCE SERVICES

We provide uninterrupted and comfortable management services by offering protective and preventive vehicle maintenance services.

#### MANAGEMENT SERVICES

We provide rail system control station services and trip regulation services with high passenger

satisfaction rate and according to the international standards.

#### SHADOW MANAGEMENT

With our hundreds of trained and specialized engineers who have acquired line opening experience for more than 10 rail systems, we perform various processes, from design to trial runs, and operate with passengers during rail system constructions with the management experience, and productive, sustainable and affordable solutions that we have.



#### SYSTEM ENGINEERING

Electrical, mechanical, physical, electromagnetic, technical and functional coherence tests for all systems in rail system projects, as well as the design-manufacturing compatibility tests in all system processes are performed by well-trained and qualified experts.

#### CONSULTANCY SERVICES

We provide engineering consultancy services to Administrations with our well-trained and qualified technical personnel.

#### PAKS (PSD) MANUFACTURING

#### AND INSTALLATION

We provide PSD manufacturing, installation and maintenance services thanks to the experience we acquired as a result of our R&D activities conducted for Platform Screen Door Systems that prevent passengers standing on station platforms from falling on to the rail line and allow them to have safe journeys.

#### PROJECT DESIGN AND FEASIBILITY-SURVEY SERVICES

Prior to the construction stage of rail system lines, we provide project designs for identification

of destinations, determination of station locations, feasibility surveys, architectural and structural design works, electrical, electronic and electromagnetic designs.

#### PIS SUPPLY: Passenger Information System Inside Vehicles and Inside Platforms

Within the scope of our services, we have been conducting R&D operations on passenger information systems which allows for audio-visual notifications for passengers inside the rail system vehicles; and these are integrated to the rail system vehicles and stations independent of any brands.





#### VEHICLE SUPPLY

The design, manufacturing and installation of metro and tram vehicles are developed in line with the international standards, and we are able to manufacture them in accordance with operational needs. The already manufactured 18 domestic tram vehicles have been in service for almost a decade without any problems.

#### TRAM TRACKING SYSTEM

We have been conducting R&D operations for the tram tracking system that allows for tracking the trip information of tram vehicles on tram lines from the control office, and we are offering them to the use of the tram management. The tram tracking system we have created has been smoothly used with comfort in our tram line for years.

#### SIGNALIZATION SYSTEM DESIGN AND CONSTRUCTION

As part of our R&D operations, we are capable of developing CBTCGoA4 signalization systems that enable train movements in metro lines according to the plan and safety in low headway, all in compliance with the latest technologies and international standards.







## İSPARK A.Ş.

Istanbul Parking Enterprises Co.

İSPARK A.Ş. was founded in 2005 as an affiliate company to the Istanbul Metropolitan Municipality in order to offer high quality, safe, and modern parking lot services to drivers with the slogan "Safe Parking Friendly Service".

İSPARK's founding purpose is to take over Istanbul Metropolitan Municipality's multi-storey, outdoor parking lots and to manage and operate them with a centralized and systematized manner; and to establish a citizenship and parking culture. İSPARK A.Ş. develops projects in order to contribute to reducing the density of traffic in the city, and it endeavors to strategically identify locations for new parking lots, and to predominantly build multi-storey, underground and technological parking lots.

İSPARK A.Ş. makes an effort to encourage short-term parking in the city, and to remove long-term parking from main arteries and transfer it to low-density regions. As it brought various projects and innovation to Istanbul, İSPARK A.Ş. endorses integrated transportation. Aside from the modern services it provides with its trained and technologically equipped staff, İSPARK A.Ş. also contributes to reducing the density of traffic in Istanbul with projects like "Boat Park", "Helipoint", "Pocket Bus Terminal", "Smart Bike", "Park and Ride", "Technological Parking Lots", and "Smart Applications".

+90 (216) 635 00 00

[www.ispark.istanbul](http://www.ispark.istanbul)





İSPARK İstanbul Otopark İşletmeleri Tic. A.Ş. has been working in the parking lot management business since 2005. It has accumulated enough knowledge that it is perfectly capable of offering consultancy services at home and abroad. It aims at developing multi-perspective approach and applications in the area of management of vehicle parking lots until it goes from TSE (Turkish

Standards Institution) standards to ISO international quality standards.

Aside from parking lot operations, İSPARK has acquired extensive experience in transportation management such as pocket bus terminal, boat park, cam and minibus stops, iTaksi management center, smart bike, etc.. Areas in which İSPARK is capable of offering consultancy are as follows:

- Consultancy for Choosing Parking

Lot Location and Type and Capacity Determination

- Consultancy for Ownership Situation Analysis
- Consultancy for Traffic Parking Lot Inventory
- Consultancy for Capacity Increasing Processes
- Consultancy for Standardization Applications
- Consultancy for Infrastructure and System

















### **SARACHANE CITY HALL**

Istanbul Metropolitan Municipality Kemalpaşa Neighborhood

July 15 Martyrs Ave No: 5 34134 Fatih / ISTANBUL

Phone: +90 (212) 455 1300

### **IMM BAKIRKOY SERVICE BUILDING**

Istanbul Metropolitan Municipality, Osmaniye Neighborhood

Cobancesme Kosuyolu Boulevard No:5 34568 Bakirkoy

ISTANBUL

Phone: +90 (212) 449 400

### **KASIMPASA ADDITIONAL SERVICE BUILDING**

Istanbul Metropolitan Municipality, Hacıahmet Neighborhood

Muhsin Yazıcıoğlu Ave No:1 34440 Kasımpaşa Beyoğlu

ISTANBUL

Phone: +90 (212) 449 4000

### **KARTAL ADDITIONAL SERVICE BUILDING**

Istanbul Metropolitan Municipality, Cevizli Neighborhood

Cevizli Avenue D-100 on Southern Byroad, No: 33 34870

Kartal / ISTANBUL

Phone: +90 (212) 449 4000

[www.ibb.istanbul](http://www.ibb.istanbul)